

INDEX

1	OPERATING SYSTEMS	3
2	LAYOUTS	4
2.1	LAYOUT TYPE, DEPTH AND LOCAL IDENTIFIERS	4
2.2	PIXEL SIZE OF LAYOUTS	5
3	SPECIAL SOFTKEYBOARD FEATURES	6
3.1	STANDARD FEATURES.....	6
3.2	EXTENDED MODE FEATURES	6
4	CHANGE SOFTKEYBOARD PROPERTIES	7
4.1	SOFTKEYBOARD KEYBOARD LANGUAGE	8
4.2	KEY SEQUENCE AVAILABLE	9
4.3	LOCK KEYS	10
4.4	DEFAULT VALUE.....	10
4.5	SOFTKEYBOARD COLORS	11
4.6	START UP AND CLOSE	12
5	KEYBOARD SIZE	14
5.1	TRANSPARENCY IN PERCENT (10-100)	15
5.2	KEYBOARD LAYOUTS AVAILABLE.....	16
5.3	START LAYOUTTYPE	17
6	FRONTKEY PROPERTIES	18
6.1	ATTACH MACRO	18
7	VERSION INFORMATION	21
8	SCREENSHOTS SOFTKEYBOARD	22
9	VFRONTKEY	23
9.1	AUTOMATIC START AND STOP OF THE VFRONTKEY APPLICATION	25
10	KEYLOOK	26
11	SOFTKEYBOARD API (CLASSIC API)	27
11.1	SEND MESSAGES TO THE SOFTKEYBOARD (CLASSIC API)	27
11.2	RECEIVE MESSAGES FROM THE GENKEY SERVICE (CLASSIC API)	32
12	SOFTKEYBOARD API (C++ API)	36
12.1	SEND MESSAGES TO THE SOFTKEYBOARD (C++ API).....	36
12.2	READ FRONTKEY STATUS FROM THE GENKEY SERVICE (C++ API).....	41

1 OPERATING SYSTEMS

The Softkeyboard V4.00 runs with the following operating systems:

- Windows XP Home
- Windows XP Professional
- Windows XP Embedded
- Windows Vista
- Windows 7

The Softkeyboard doesn't run with the following operating systems:

- Windows NT
- Windows ME
- Windows 98
- Windows 95
- Windows 3.1/3.11
- MS-DOS
- Linux/Unix/Solaris

The Softkeyboard has not been tested with the following operating systems:

- Windows 2000
- Windows 2003 Server
- Windows 2008 Server

2 LAYOUTS

2.1 LAYOUT TYPE, DEPTH AND LOCAL IDENTIFIERS

Language	Layout type	Layout depth	Locale identifiers High / Low
German	Standard	8	0x407 / 0x407
English (United States)	Standard	7	0x409 / 0x409
English (United Kingdom)	Standard	8	0x809 / 0x809
French	Standard	8	0x40c / 0x40c
Italian	Standard	8	0x410 / 0x410
Spanish	International	8	0x40a / 0xc0a
Portuguese	Standard	8	0x816 / 0x816
Turkish	Q	8	0x41f / 0x41f
Finnish	Standard	8	0x40b / 0x40b
Danish	Standard	8	0x406 / 0x406
Swedish	Standard	8	0x41d / 0x41d
Japanese	Standard	10	0xe001 / 0x411
Korean	Standard	9	0xe001 / 0x412
Greek	Standard	8	0x408 / 0x408
Czech	Standard	8	0x405 / 0x405
Polish	Programmers	8	0x415 / 0x415
Romanian	Standard	8	0x418 / 0x418
Russian	Standard	7	0x419 / 0x419
Serbian	Latin	8	0x81a / 0x81a
Croatian	Standard	8	0x41a / 0x41a
Hungarian	Standard	8	0x40e / 0x40e
Dutch	Standard	8	0x413 / 0x413
Slovak	QWERTY	8	0xf013 / 0x41b
Slovenian	Standard	8	0x424 / 0x424
Bulgarian	Standard	7	0x402 / 0x402
Norwegian	Standard	8	0x414 / 0x414

2.2 PIXEL SIZE OF LAYOUTS

Layout size	Pixel size ABC-Layout (Standard Mode)	Pixel size ABC-Layout (Extended Mode)	Pixel size Num-Layout
2	423x148	460x148	124x144
3	515x181	559x181	132x178
4	599x216	649x216	156x212
5	699x252	756x252	180x248
6	799x287	862x287	204x278
7	892x320	960x320	228x313
8	992x356	1070x356	252x348
9	1092x392	1174x392	288x378
10	1195x449	1280x449	280x416
11	1280x449	-	280x416
Func A	800x98	-	-
Func B	800x98	-	-

3 SPECIAL SOFTKEYBOARD FEATURES

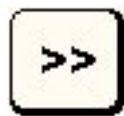
3.1 STANDARD FEATURES



Upsizes the layout of the Softkeyboard.



Downsizes the layout of the Softkeyboard.



Changes the layout type between alpha numeric layout, numeric block layout and function block layout (if it's enabled) one after another.



Changes the numeric bloc layouts between digits and arrows.

Free Area

Moves the Softkeyboard on the screen.

3.2 EXTENDED MODE FEATURES

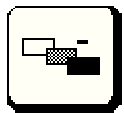
Additional buttons for fast access to often used functionality.



Hides the Softkeyboard.



Increases the transparency of the Softkeyboard.

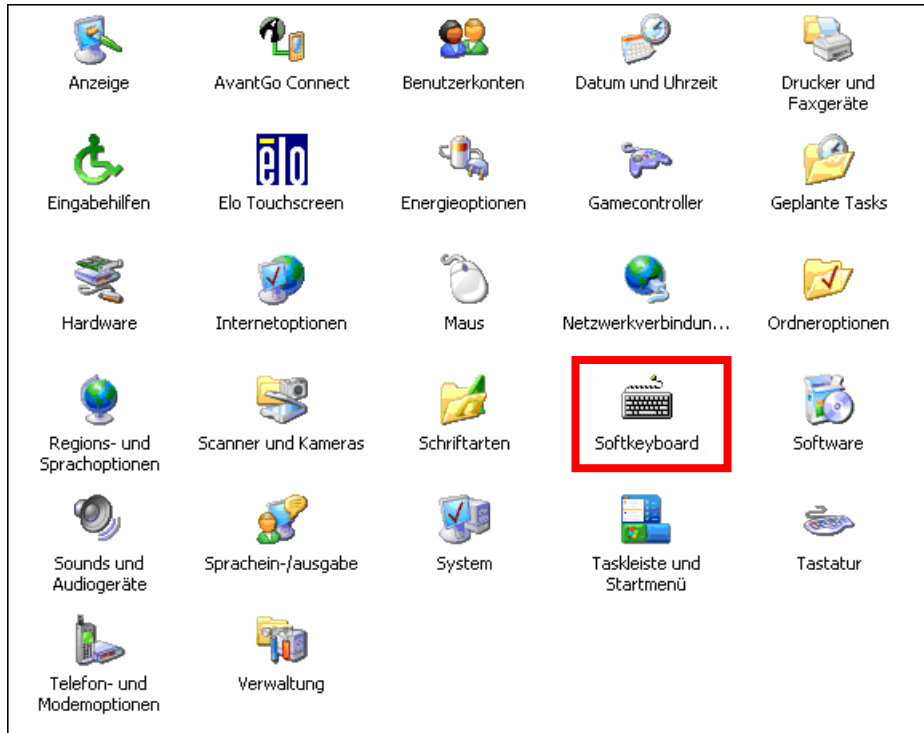


Decreases the transparency of the Softkeyboard.

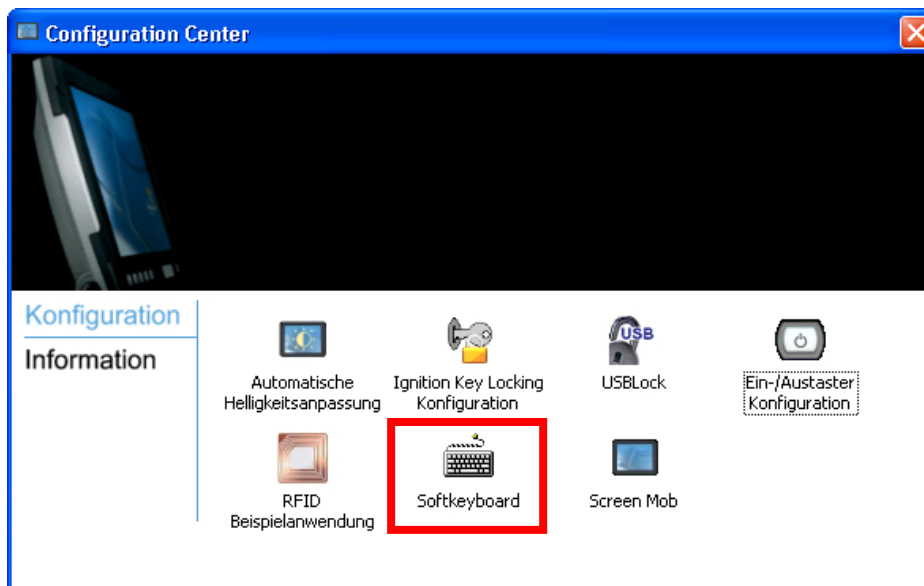
4 CHANGE SOFTKEYBOARD PROPERTIES

Start configuration of Softkeyboard by clicking its icon in the Control Panel (elder Versions) or by starting the ads-tec Configuration Center (latest versions).

OLD VERSION



NEWER VERSIONS

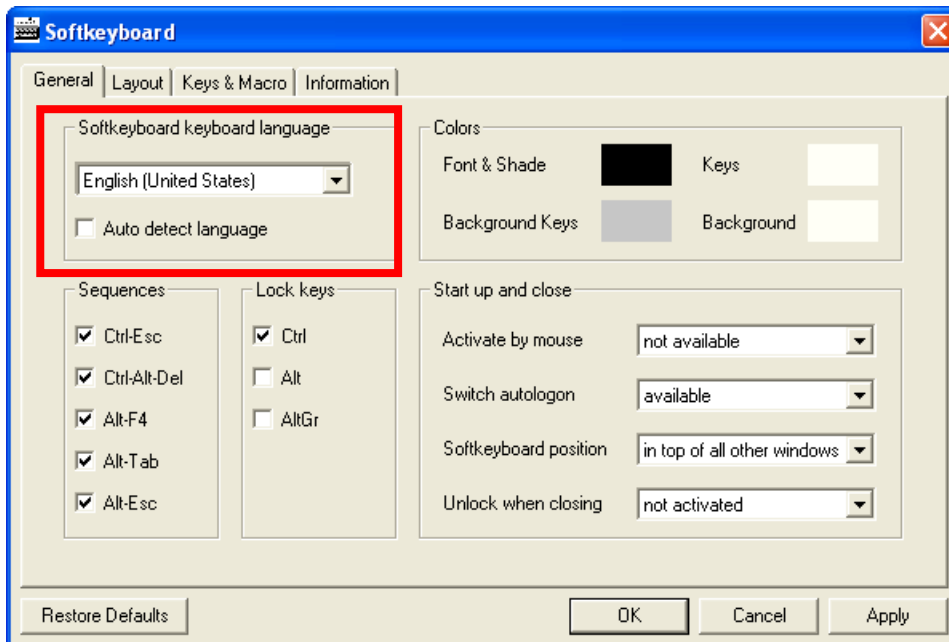


4.1 SOFTKEYBOARD KEYBOARD LANGUAGE

The following languages are available:

- German
- English (United States)
- English (United Kingdom)
- French
- Italian
- Spanish
- Portuguese
- Finnish
- Turkish
- Danish
- Swedish
- Japanese
- Korean
- Greek
- Czech
- Polish
- Romanian
- Russian
- Serbian
- Croatian
- Hungarian
- Dutch
- Slovak
- Slovenian
- Bulgarian
- Norwegian

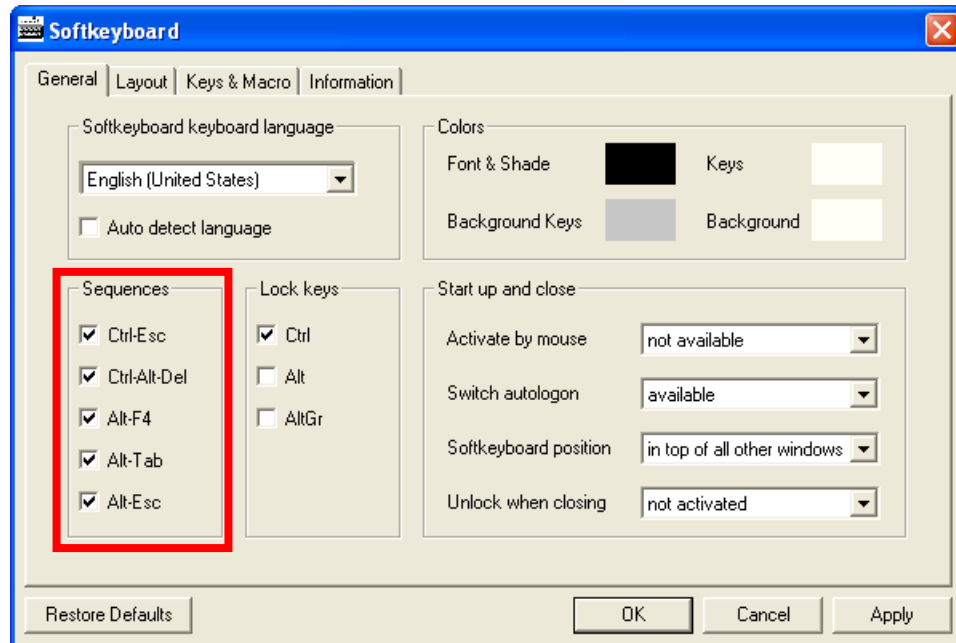
If "Auto detect language" is enabled the Softkeyboard will use the language of your local operating system.



4.2 KEY SEQUENCE AVAILABLE

Enable/Disable key sequences for the combinations:

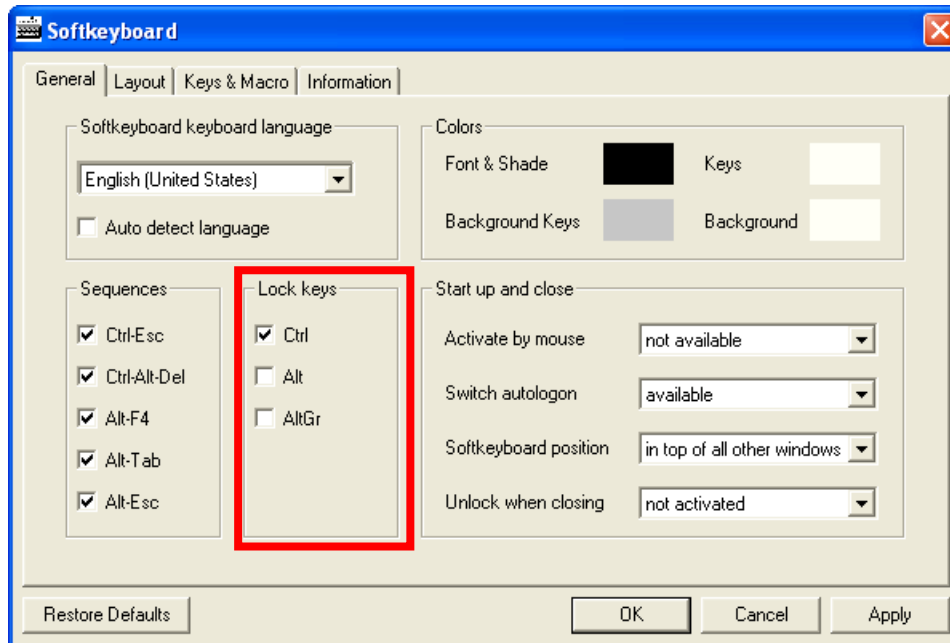
- Ctrl-Esc
- Ctrl-Alt-Del
- Alt-F4
- Alt-Tab
- Alt-Esc



4.3 LOCK KEYS

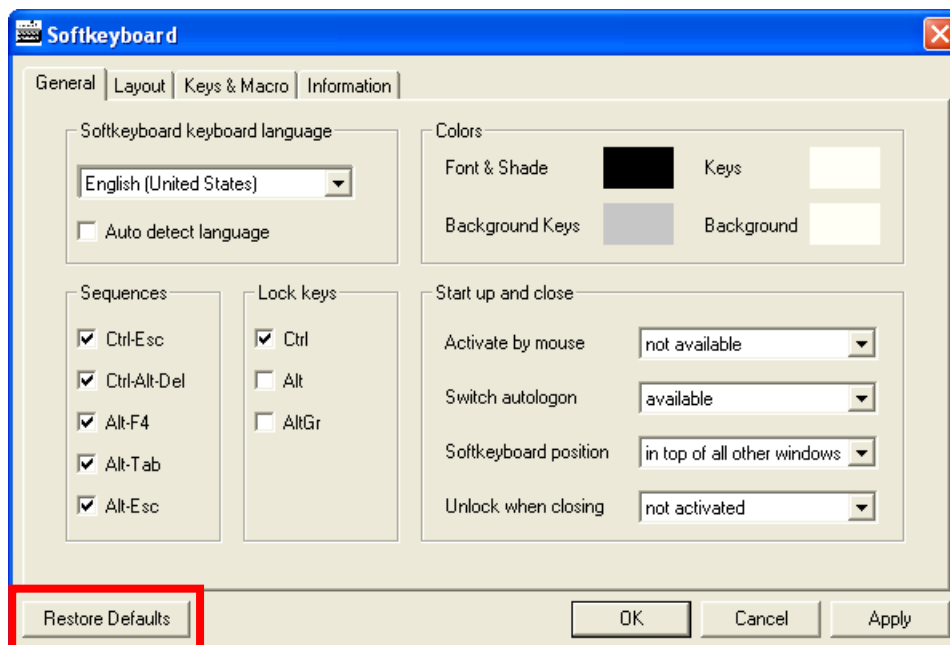
Lock/Unlock the keys Ctrl, Alt or AltGr to send combinations like Ctrl+A or Alt+F4 without multiple input of Ctrl or Alt.

- Ctrl
- Alt
- AltGr



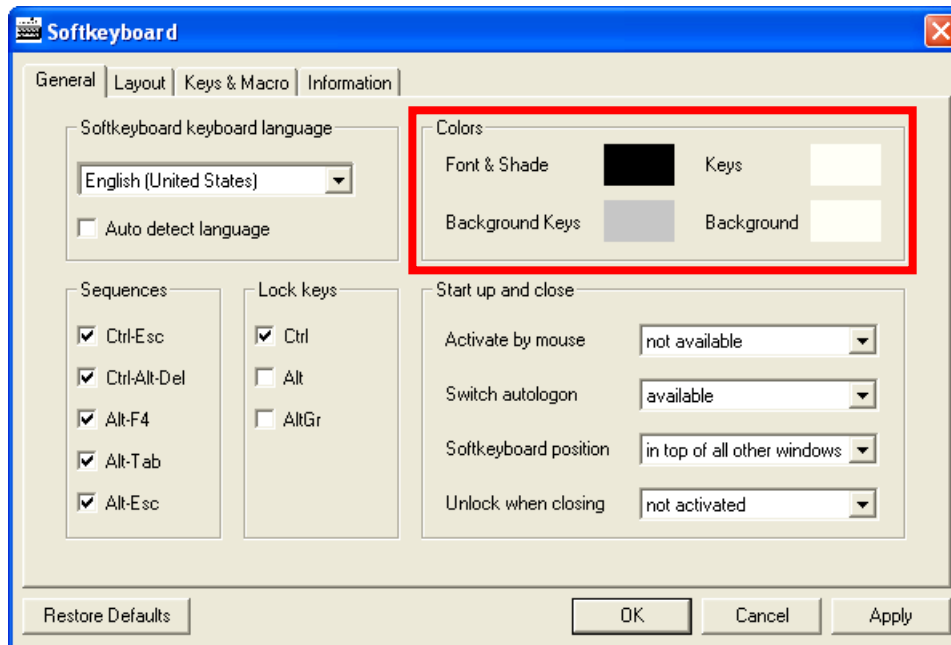
4.4 DEFAULT VALUE

Clicking this button to restore default values of all properties.



4.5 SOFTKEYBOARD COLORS

Change the colors of Softkeyboard by clicking in one of the four color areas (right of description) and select a new color from the color dialog.



4.6 START UP AND CLOSE

ACTIVATE BY MOUSE

- *not available:* Activation of Softkeyboard by mouse-click is not supported.
- *right mouse button:* Right mouse button will be enabled to popup (if hide) or to hide (if show) the Softkeyboard.
- *middle mouse button:* Middle mouse button will be enabled to popup (if hide) or to hide (if show) the Softkeyboard.

SWITCH AUTOLOGON

Toggles existing autologon registry entry "AutoAdminLogon" with a key sequence (Microsoft Windows 2000 and newer).

- *not available:* Key sequence is disabled.
 - *available:* Key sequence is activated (Ctrl+Alt+Shift+Shift).

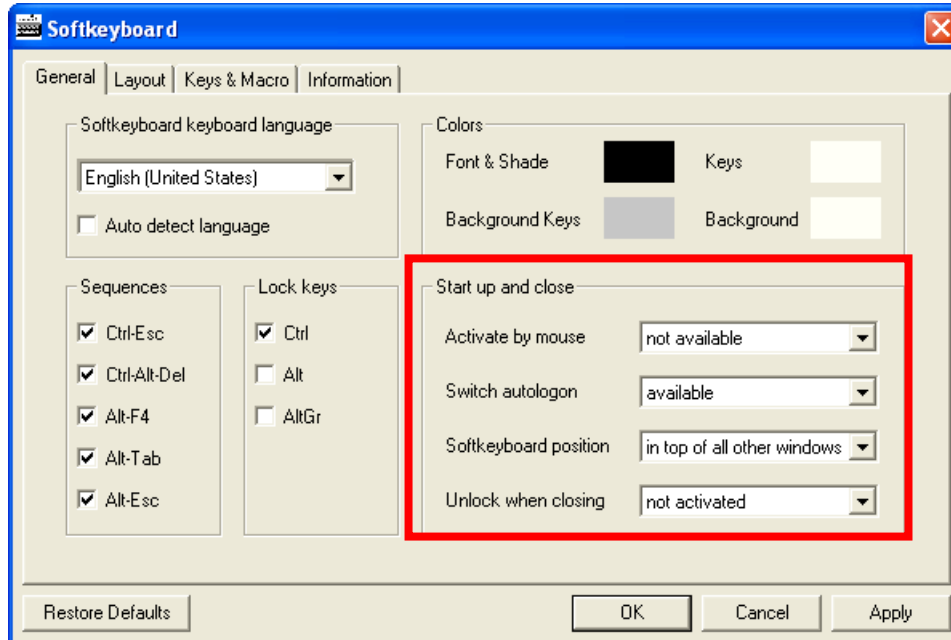
Ctrl-Alt-Shift-Shift	short beep	AutoLogon
Ctrl-Alt-Shift-Shift	long beep	manual
- Logon

POSITION SOFTKEYBOARD

- *foreground window:* Softkeyboard will be overlapped by system menus and Task manager.
- *in top of all other windows:* Softkeyboard will always be in first place of the z-order and should be never overlapped by any other window.

UNLOCK WHEN CLOSING

- *not activated:* The state of Ctrl, Alt and AltGr will not be unlocked while closing Softkeyboard.
- *activated:* The state of Ctrl, Alt and AltGr will be unlocked while closing Softkeyboard.



5 KEYBOARD SIZE

MINIMUM

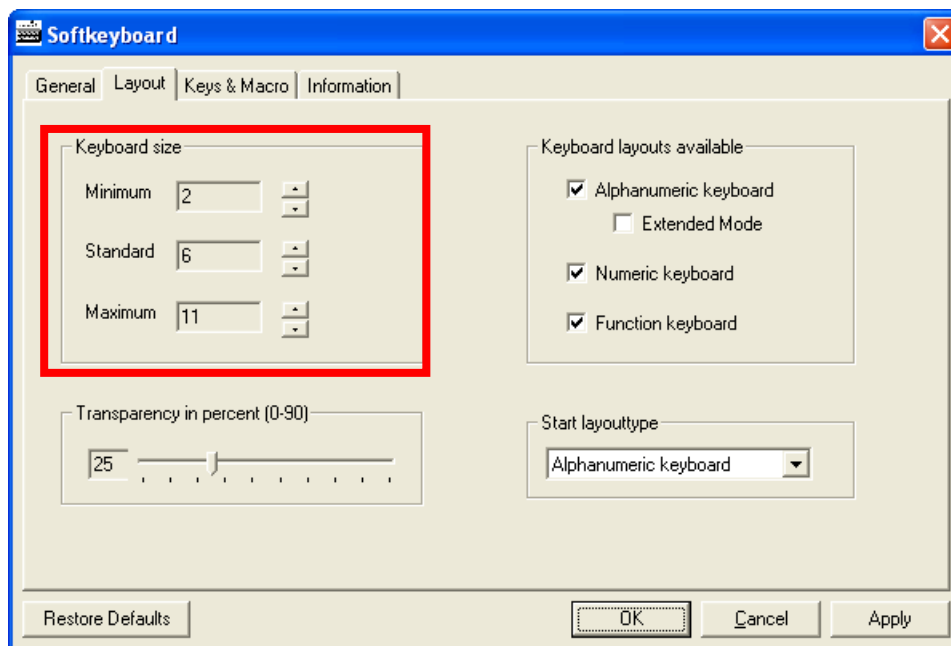
- *Values 2 – 11:* Smallest zoom factor available for resizing the keyboard.

STANDARD

- *Values 2 – 11:* Default zoom factor available for resizing the keyboard.

MAXIMUM

- *Values 2 – 11:* Largest zoom factor available for resizing the keyboard.

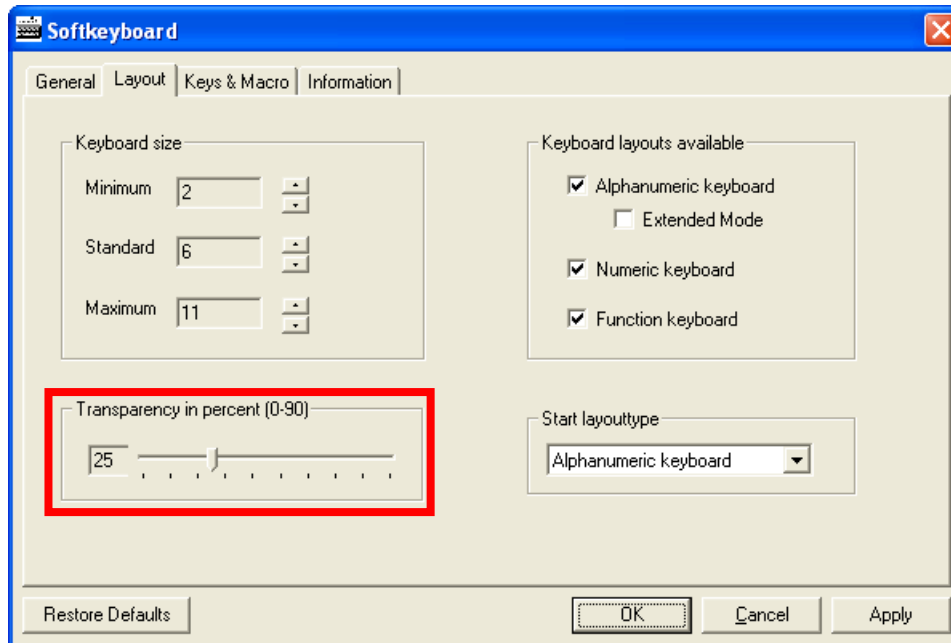


5.1 TRANSPARENCY IN PERCENT (10-100)

- *Values 10-100* Any value between 10 and 100 is possible. It's recommended to use values between 50 and 100.

Value 10 Softkeyboard and Virtual-FrontKey are nearly absolute transparent.

Value 100 Softkeyboard and Virtual-FrontKey are not transparent.



5.2 KEYBOARD LAYOUTS AVAILABLE

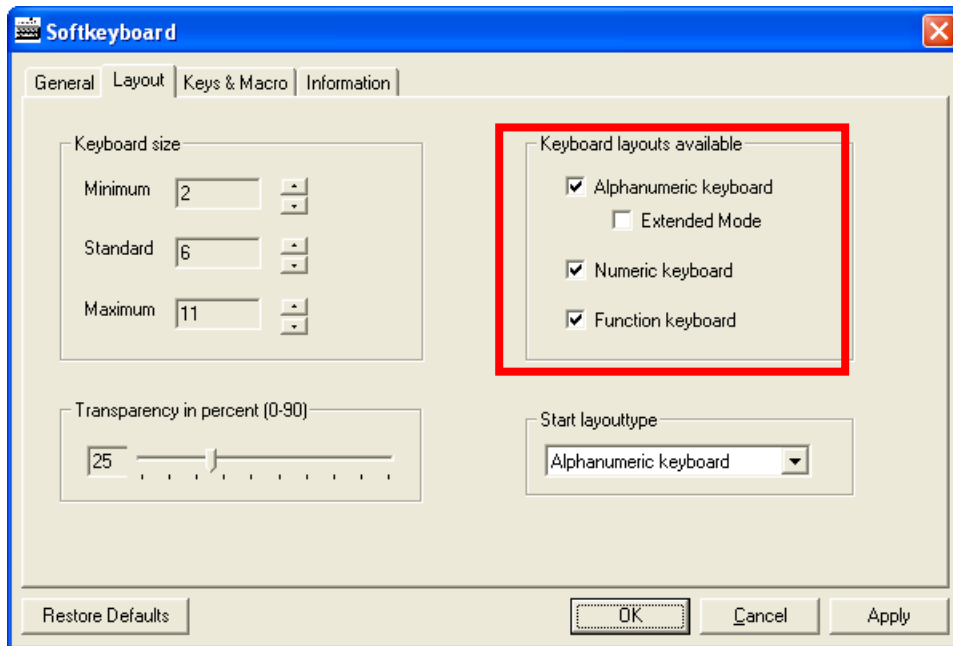
Enable/Disable the following keyboard layout:

- Alphanumeric keyboard
- Numeric keyboard
- Function keys

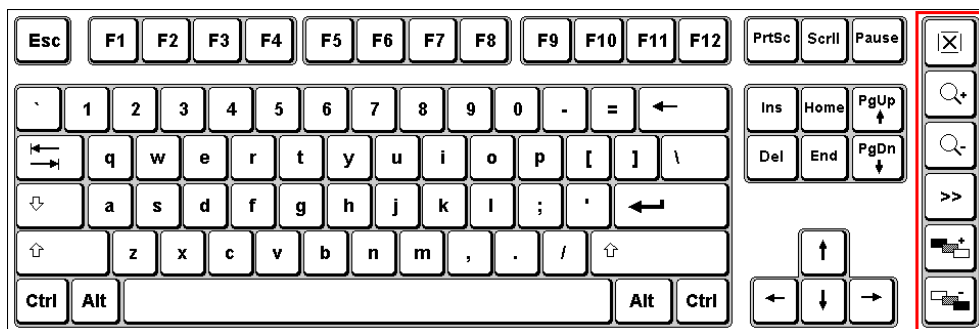


Note:

At least one keyboard layout must be enabled!



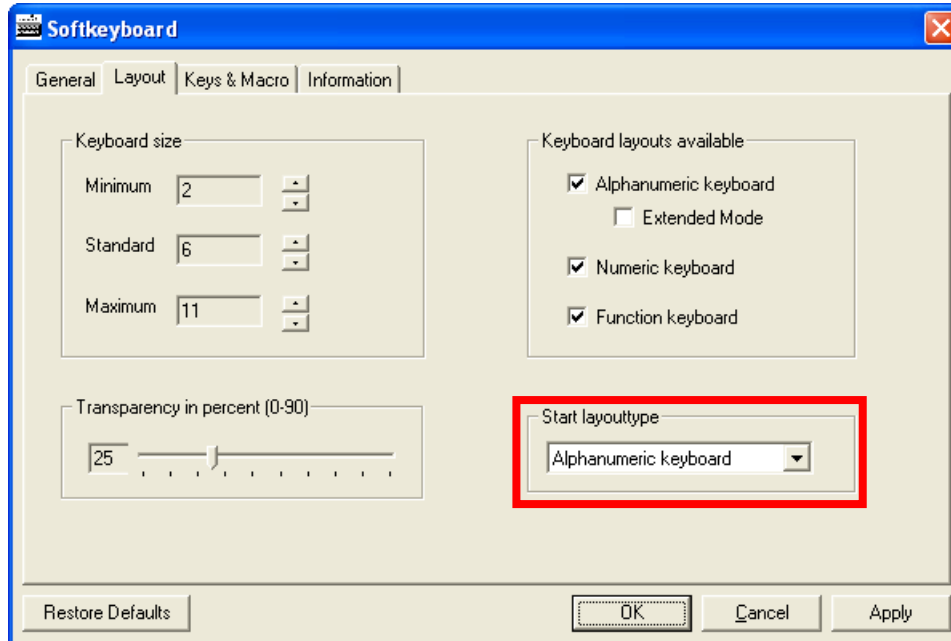
The Extended Mode option enables in the alphanumeric keyboard layout the red marked six buttons on the right border of the Softkeyboard (see the following picture).



5.3 START LAYOUTTYPE

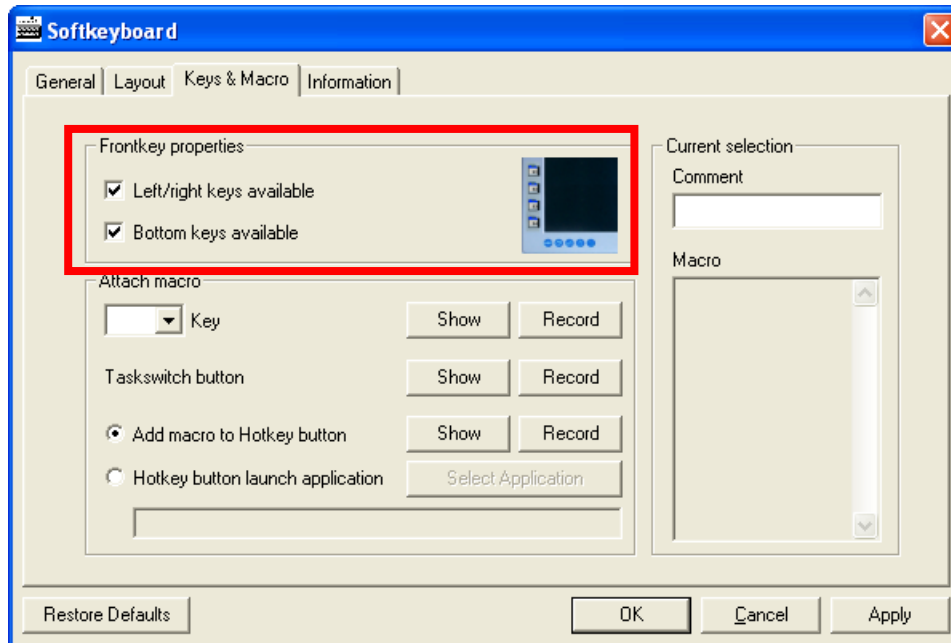
The following layouttypes are available (if it's enabled):

- *Alphanumeric keyboard* Softkeyboard will be started with alpha numeric layout.
- *Numeric keyboard* Softkeyboard will be started with numeric block layout.
- *Function keys* Softkeyboard will be started with function block layout.



6 FRONTKEY PROPERTIES

Enable or disable the check-boxes for the hardware keys which are available at the front of the panel.



6.1 ATTACH MACRO

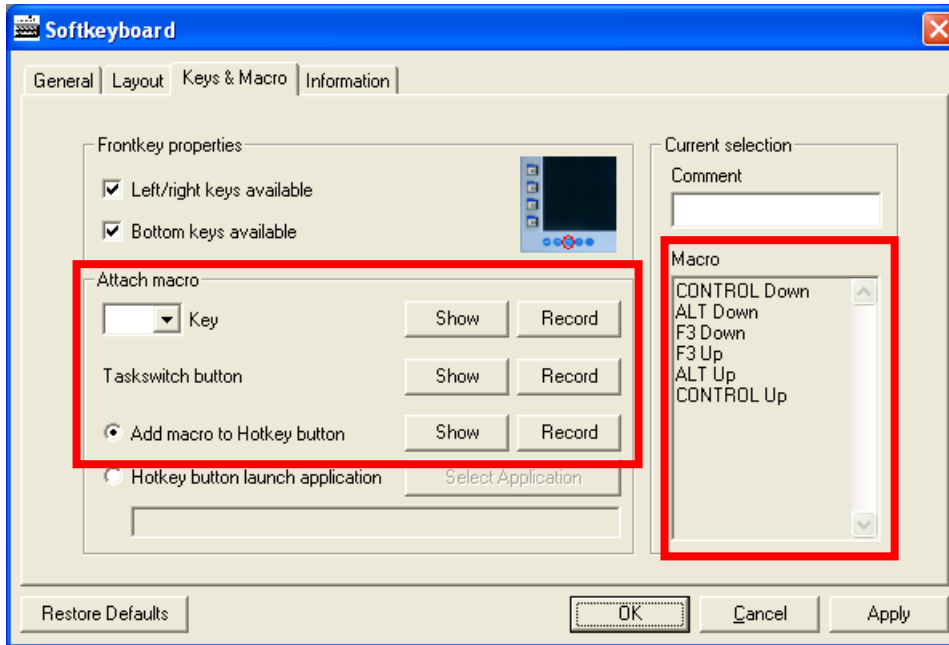
If the "Left/right keys available" is activated you can choose in the dropdown box one of the additional keys to record a macro.

To do this, choose the number of your favorite frontkey and click the "Record"-button. Now you can start recording by pressing a key or key sequence (for example: "F5" or "Ctrl + Alt + F3").

If the recording is completed click the "Stop"-button. The "Show"-button will indicate the newly macro

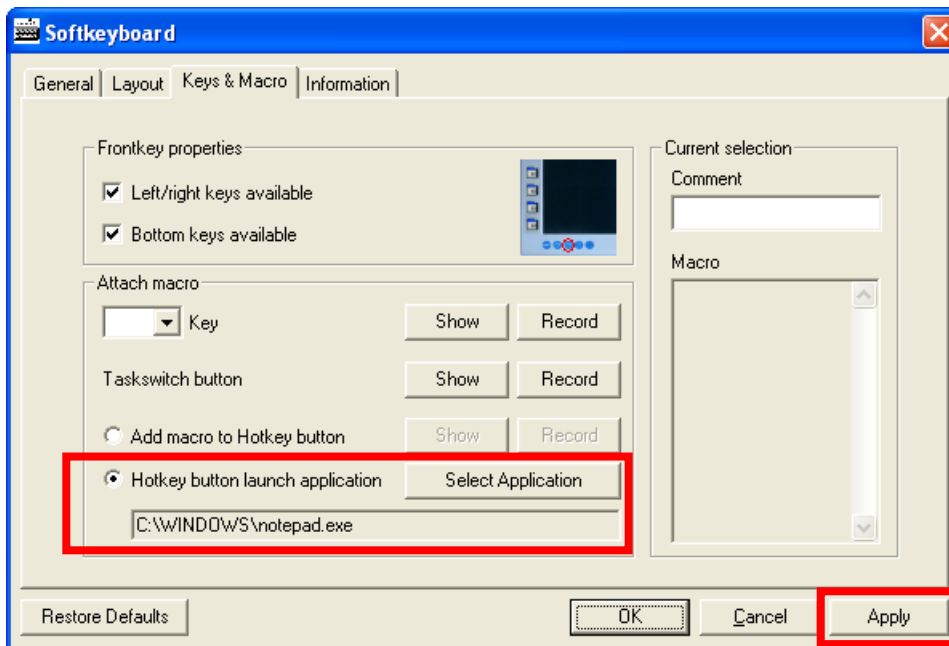
You can repeat the same procedure for the Taskswitch-button and the Hotkey-button, if the option

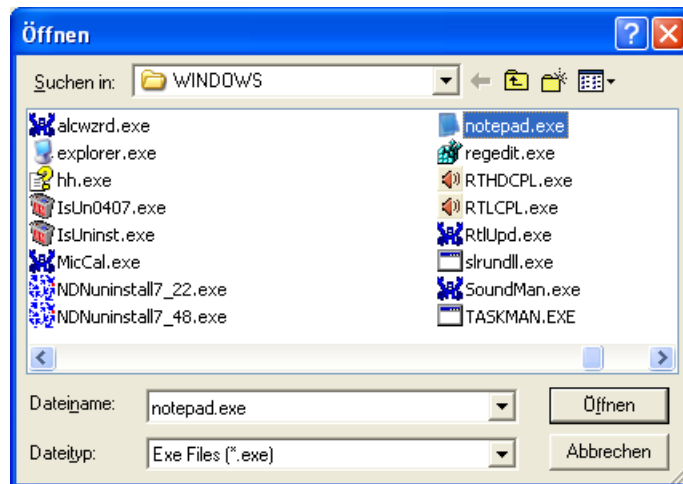
"Add macro to Hotkey button" is activated.



An alternative definition for the Hotkey-button is to launch an application by pressing this key.

Please select the application in the window that appears by clicking the "Select Application"-button.



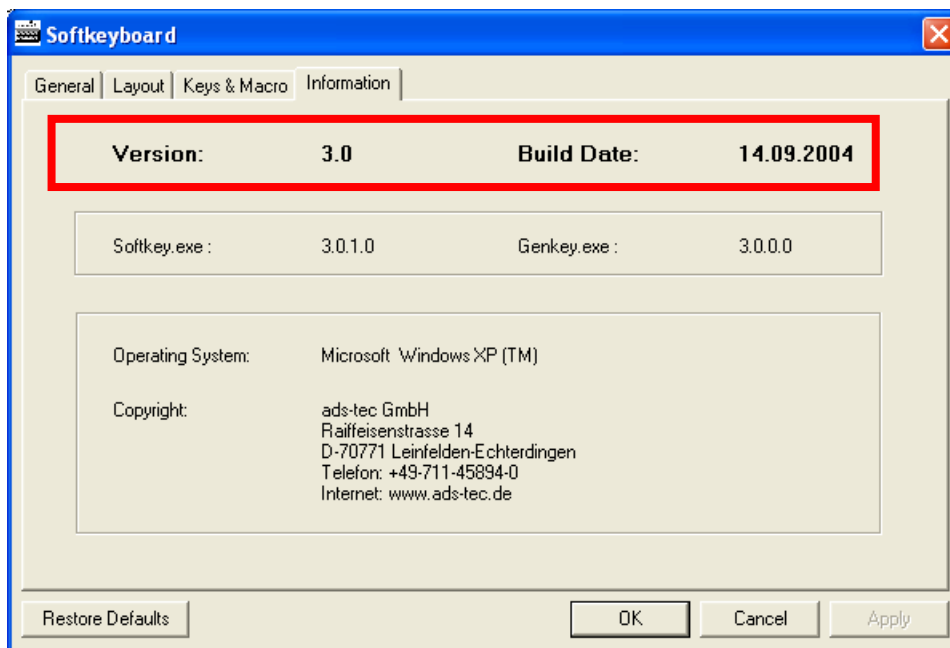
**Note:**

For the changes to take effect please first click the "Apply"-button!

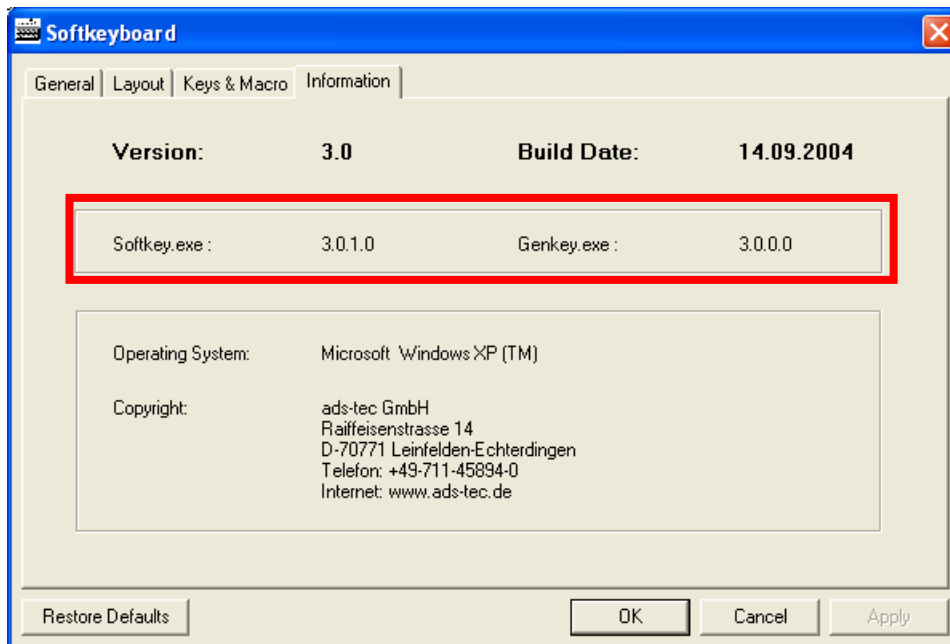
7 VERSION INFORMATION

To get the information about the Softkeyboard version please have a look at the bottom right corner (alpha numeric layout and function block layout) or at the left upper corner (numeric block layout).

On the Control Panel Applet you get information about the Softkeyboard version by clicking on the information tab. In the next picture you can see the version and build date of the product.

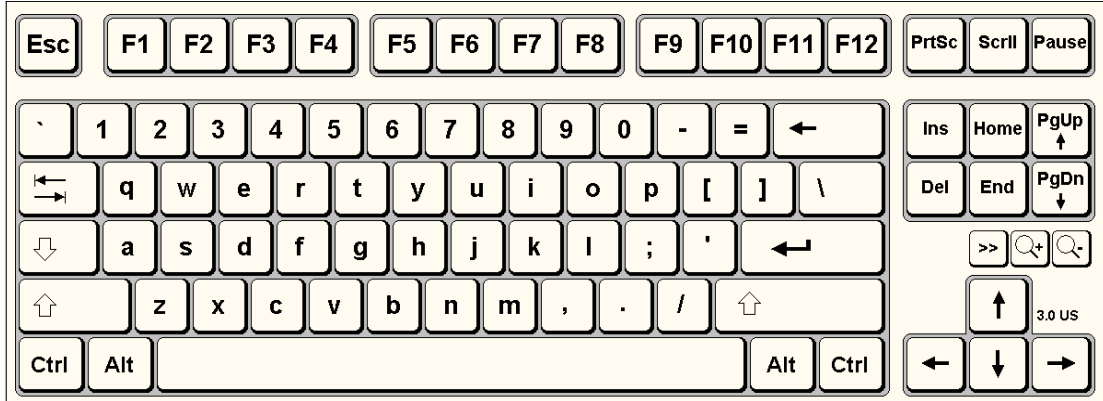


In the next picture the file version of "Softkey.exe" and "Genkey.exe" is shown.

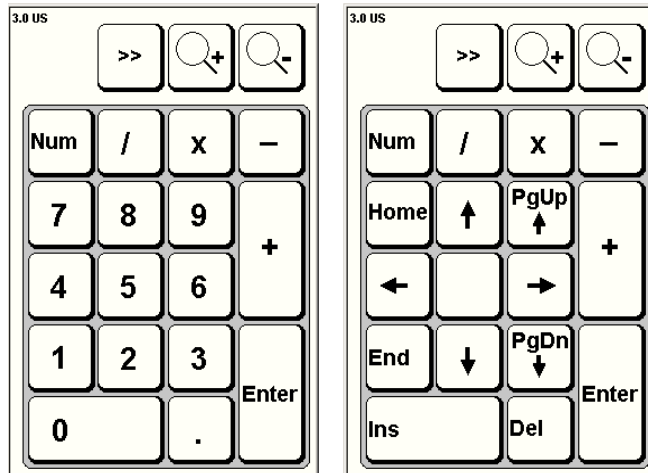


8 SCREENSHOTS SOFTKEYBOARD

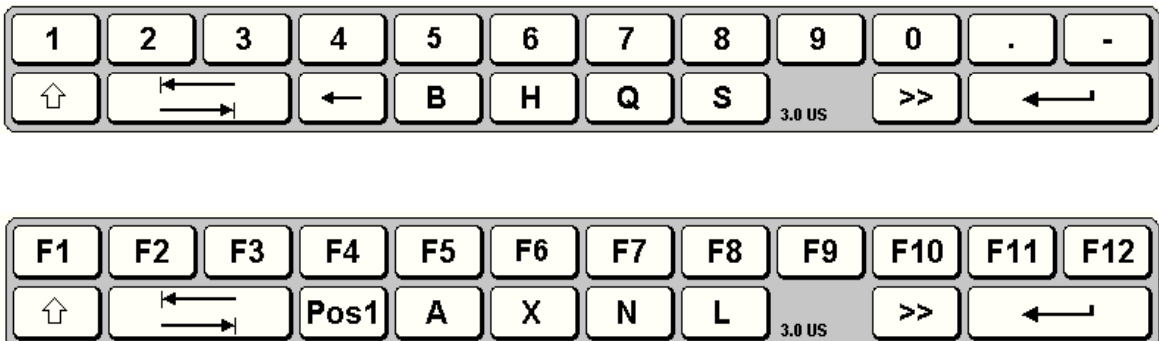
Alpha numeric layout:



Numeric block layout:



Function block layout (normal status and shift status):



9 VFRONTKEY

Open the folder Softkeyboard and start the VFrontkey.exe application to simulate the frontkey buttons. Open the file SoftKey.ini for configuring the VFrontkey application.



There are three layouts available:



Layout 1



Layout 2



Layout 3

One click on the ABC button or on the keyboard button in the third layout will show or hide the Softkeyboard. One click on the Mouse button in the first layout simulates the right mousekey functionality.

You can change the configuration in the section [VfrontKey] of the SoftKey.ini file. The options below are available:

Layout: Changes the layout type of Vfrontkey application. Available values are 1, 2 and 3, default value is 1.

1 = Layout 1

2 = Layout 2

3 = Layout 3

MoveTimeout: Timeout to start the movement of the VFrontkey application. Any positive value is possible, default value is 500.

0...nnnn = Timeout in milliseconds.

Mode: The way of resizing the application. Available values are 0, 1 and 2, default value is 1.

0 = The size is adapted to the Softkeyboard application. The following three options are ignored.

1 = The size is determined by the option SizeType. The options SizeWidth and SizeHeight are ignored.

2 = The size is determined by the options SizeWidth and SizeHeight. The option SizeType is ignored.

SizeType: Ten pre-defined sizes from 1 (small) to 10 (large), default value is 6.

1...10 = Size types.

SizeWidth: The width of the application from 10 pixels to 380 pixels, default value is 192.

10...380 = Width in pixel.

SizeHeight: The height of the application from 10 pixels to 274 pixels, default value is 58.

10...274 = Height in pixel.

If VFrontkey is the active application you can change its size with the buttons F11 and F12. F11 decreases the size of the application down to the minimum value and F12 increases the size of the application up to the maximum value.

9.1 AUTOMATIC START AND STOP OF THE VFRONTKEY APPLICATION

**Note:**

This option is currently not available for V4.xx.

With this option is it possible to open the Softkeyboard application in the logon screen to enter the logon data.

You can configure the automatic start and stop of the VFrontkey application in the file "Genkey.ini" in the Windows directory. In this file is the section [VFRONTKEYSETTINGS] with the "StartVFrontkey" parameter. The options below are available:

StartVFrontkey:

0 = VFrontkey doesn't start and stop with the Softkeyboard application.

1 = VFrontkey starts and stops with the Softkeyboard application.

10 KEYLOOK

Open the folder Softkeyboard and start the keylook.exe application. This tool will help you finding out the keycodes and scancodes for any pressed key on the keyboard.



Keyboard Message Looker									
Message	Key	Char	Repeat	Scan	Ext	ALT	Prev	Tran	
WM_KEYDOWN	65		1	30	No	No	Up	Down	
WM_CHAR		97 a	1	30	No	No	Up	Down	
WM_KEYUP	65		1	30	No	No	Down	Up	
WM_KEYDOWN	66		1	48	No	No	Up	Down	
WM_CHAR		98 b	1	48	No	No	Up	Down	
WM_KEYUP	66		1	48	No	No	Down	Up	
WM_KEYDOWN	67		1	46	No	No	Up	Down	
WM_CHAR		99 c	1	46	No	No	Up	Down	
WM_KEYUP	67		1	46	No	No	Down	Up	
WM_KEYDOWN	49		1	2	No	No	Up	Down	
WM_CHAR		49 1	1	2	No	No	Up	Down	
WM_KEYUP	49		1	2	No	No	Down	Up	
WM_KEYDOWN	50		1	3	No	No	Up	Down	
WM_CHAR		50 2	1	3	No	No	Up	Down	
WM_KEYUP	50		1	3	No	No	Down	Up	
WM_KEYDOWN	51		1	4	No	No	Up	Down	
WM_CHAR		51 3	1	4	No	No	Up	Down	
WM_KEYUP	51		1	4	No	No	Down	Up	

1 1 SOFTKEYBOARD API (CLASSIC API)

11.1 SEND MESSAGES TO THE SOFTKEYBOARD (CLASSIC API)

SHOW SOFTKEYBOARD

Description
Shows the Softkeyboard on the screen.
Definition
static UINT SOFTKEYBOARD_MSG_OPEN;
Registration
SOFTKEYBOARD_MSG_OPEN = ::RegisterWindowMessage(_T("SOFTKEYBOARD_MSG_OPEN"));
Usage
::PostMessage(HWND_BROADCAST, SOFTKEYBOARD_MSG_OPEN, 0, 0);

HIDE SOFTKEYBOARD

Description
Hides the Softkeyboard on the screen.
Definition
static UINT SOFTKEYBOARD_MSG_ICONIZE;;
Registration
SOFTKEYBOARD_MSG_ICONIZE = ::RegisterWindowMessage(_T("SOFTKEYBOARD_MSG_ICONIZE"));
Usage
::PostMessage(HWND_BROADCAST, SOFTKEYBOARD_MSG_ICONIZE, 0, 0);

MOVE POSITION

Description
Moves the Softkeyboard to the new x,y Position.
Definition
<pre>static UINT SOFTKEYBOARD_MSG_API;</pre>
Registration
<pre>SOFTKEYBOARD_MSG_API = ::RegisterWindowMessage(_T("SOFTKEYBOARD_MSG_API"));</pre>
Usage
<pre>const short SKB_POSITION = 1; short XPos = 200; short YPos = 400; ::PostMessage (HWND_BROADCAST, SOFTKEYBOARD_MSG_API, SKB_POSITION, MAKELPARAM(XPos,YPos));</pre>

CHANGE SIZE

Description
Changes the size of Softkeyboard. Available values are from 2 up to 11.
Definition
<pre>static UINT SOFTKEYBOARD_MSG_API;</pre>
Registration
<pre>SOFTKEYBOARD_MSG_API = ::RegisterWindowMessage(_T("SOFTKEYBOARD_MSG_API"));</pre>
Usage
<pre>const short SKB_SIZE = 2; short factor = 6; ::PostMessage (HWND_BROADCAST, SOFTKEYBOARD_MSG_API, SKB_SIZE, factor);</pre>

CHANGE LAYOUT

Description

Changes the layout type of Softkeyboard. Available values are 0, 1, 2 and 3.

0 = Alphanumeric keyboard layout.

1 = Numeric keyboard layout.

2 = Function block layout, Layer A.

3 = Function block layout, Layer B.

Definition

```
static UINT SOFTKEYBOARD_MSG_API;
```

Registration

```
SOFTKEYBOARD_MSG_API =  
    ::RegisterWindowMessage(_T("SOFTKEYBOARD_MSG_API"));
```

Usage

```
const short SKB_LAYOUT = 3;
```

```
short layout = 1;
```

```
::PostMessage(HWND_BROADCAST, SOFTKEYBOARD_MSG_API,  
    SKB_LAYOUT, layout);
```

CHANGE LANGUAGE

Description

Changes the language of Softkeyboard. Available values are listed below:

- 1 = German
- 2 = English (United States)
- 3 = English (United Kingdom)
- 4 = French
- 5 = Italian
- 6 = Spanish
- 7 = Portuguese
- 8 = Finnish
- 9 = Turkish
- 10 = Danish
- 11 = Swedish
- 12 = Japanese
- 13 = Korean
- 14 = Greek
- 15 = Czech
- 16 = Polish
- 17 = Romanian
- 18 = Russian
- 19 = Serbian
- 20 = Croatian
- 21 = Hungarian
- 22 = Dutch
- 23 = Slovak
- 24 = Slovenian
- 25 = Bulgarian
- 26 = Norwegian

Definition

```
static UINT SOFTKEYBOARD_MSG_API;
```

Registration

```
SOFTKEYBOARD_MSG_API =  
    ::RegisterWindowMessage(_T("SOFTKEYBOARD_MSG_API"));
```

Usage

```
const short GERMAN_DE = 1;

::PostMessage (HWND_BROADCAST, SOFTKEYBOARD_MSG_API,
               SKB_LANGUAGE, GERMAN_DE);
```

CHANGE TRANSPARENCY

Description

Changes the transparency of Softkeyboard. Available values are from 10 up to 100.

Definition

```
static UINT SOFTKEYBOARD_MSG_API;
```

Registration

```
SOFTKEYBOARD_MSG_API =
    ::RegisterWindowMessage(_T("SOFTKEYBOARD_MSG_API"));
```

Usage

```
short transparency = 50;

::PostMessage (HWND_BROADCAST, SOFTKEYBOARD_MSG_API,
               SKB_TRANSPARENCY, transparency);
```

11.2 RECEIVE MESSAGES FROM THE GENKEY SERVICE (CLASSIC API)

ABC FRONTKEY

Description
Receive this message if the ABC frontkey was pressed.
Definition
static UINT SOFTKEY_KEYABC;
Registration
SOFTKEY_KEYABC = RegisterWindowMessage("SOFTKEY_KEYABC");
Usage
<pre>LRESULT CSoftKeyDlg::DefWindowProc(UINT message, WPARAM wParam, LPARAM lParam) { if (message == SOFTKEY_KEYABC) { <i>[Your code starts here!]</i> } }</pre>

TASK TOGGLE FRONTKEY

Description

Receive this message if the task toggle frontkey was pressed.

Definition

```
static UINT SOFTKEY_KEYPAGES;
```

Registration

```
SOFTKEY_KEYPAGES = RegisterWindowMessage("SOFTKEY_KEYPAGES");
```

Usage

```
LRESULT CSoftKeyDlg::DefWindowProc(UINT message,  
                                     WPARAM wParam,  
                                     LPARAM lParam)  
{  
    if (message == SOFTKEY_KEYPAGES)  
    {  
        [Your code starts here!]  
    }  
}
```

HOTKEY FRONTKEY

Description

Receive this message if the hotkey frontkey was pressed.

Definition

```
static UINT SOFTKEY_KEYLOCK;
```

Registration

```
SOFTKEY_KEYLOCK = RegisterWindowMessage("SOFTKEY_KEYLOCK");
```

Usage

```
LRESULT CSoftKeyDlg::DefWindowProc(UINT message,  
                                     WPARAM wParam,  
                                     LPARAM lParam)  
{  
    if (message == SOFTKEY_KEYLOCK)  
    {  
        [Your code starts here!]  
    }  
}
```

RIGHT MOUSE FRONTKEY

Description
Receive this message if the right mouse frontkey was pressed.
Definition
static UINT SOFTKEY_KEYMOUSE;
Registration
SOFTKEY_KEYMOUSE = RegisterWindowMessage("SOFTKEY_KEYMOUSE");
Usage
<pre> LRESULT CSoftKeyDlg::DefWindowProc(UINT message, WPARAM wParam, LPARAM lParam) { if (message == SOFTKEY_KEYMOUSE) { <i>[Your code starts here!]</i> } } </pre>

**Note:**

The classic API works for Windows versions before Vista. With Vista, this API requires the helper application "SkbdCtrl.exe". This application registers for the messages above and communicates with the genkey service. It does not offer a user interface, nor does it show in the taskbar, and may be ended by task manager only ("end process").

12 SOFTKEYBOARD API (C++ API)

Starting with Vista, UIPI (User interface privilege isolation) restricts the way how applications can interchange windows messages. With UAC (User account control) enabled, softkey.exe runs at an elevated level, since it is started from a service, and may not receive messages from a standard application. When using the classic API, a proxy (skbdctrl.exe) receives the global window messages and talks to the service through a named pipe.

Instead of using the proxy, an application might as well directly use the named pipe to talk to the service. This API is implemented as a C++ class: CSKCtrl (source files: skctrl.cpp, skctrl.h) and may be included into existing customer's applications. An example for using this class is TestSKCtrl.exe.

12.1 SEND MESSAGES TO THE SOFTKEYBOARD (C++ API)

SHOW SOFTKEYBOARD

Description
Shows the Softkeyboard on the screen.
Definition
bool CSKCtrl::Show (void);
Usage
CSKCtrl.Show();

HIDE SOFTKEYBOARD

Description
Hides the Softkeyboard if displayed.
Definition
bool CSKCtrl::Hide (void);
Usage
CSKCtrl.Hide();

MOVE POSITION

Description
Moves the Softkeyboard to the new x,y Position.
Definition
<code>bool CSKCtrl::SetPos(int x, int y);</code>
Usage
<code>CKCtrl.SetPos(x, y);</code>

CHANGE SIZE

Description
Changes the size of Softkeyboard. Available values are from 2 up to 11.
Definition
<code>bool CSKCtrl::SetSize(int factor);</code>
Usage
<code>CSKCtrl.SetSize(factor);</code>

CHANGE LAYOUT

Description

Changes the layout type of Softkeyboard. Available values are 0, 1, 2 and 3.

0 = Alphanumeric keyboard layout.

1 = Numeric keyboard layout.

2 = Function block layout, Layer A.

3 = Function block layout, Layer B.

Definition

```
typedef enum {  
    LayoutABC = 0,  
    LayoutNUM,  
    LayoutFuncA,  
    LayoutFuncB  
} SkbdLayoutType;  
bool CSKCtrl:: SetLayout(SkbdLayoutType layout);
```

Usage

```
CSKCtrl.SetLayout(layout);
```

CHANGE LANGUAGE

Description

Changes the language of Softkeyboard. Available values are listed below:

- 0 = auto detect
- 1 = German
- 2 = English (United States)
- 3 = English (United Kingdom)
- 4 = French
- 5 = Italian
- 6 = Spanish
- 7 = Portuguese
- 8 = Finnish
- 9 = Turkish
- 10 = Danish
- 11 = Swedish
- 12 = Japanese
- 13 = Korean
- 14 = Greek
- 15 = Czech
- 16 = Polish
- 17 = Romanian
- 18 = Russian
- 19 = Serbian
- 20 = Croatian
- 21 = Hungarian
- 22 = Dutch
- 23 = Slovak
- 24 = Slovenian
- 25 = Bulgarian
- 26 = Norwegian

Definition

```
bool CSKCtrl::SetLanguage(int language);
```

Usage

```
#define GERMAN_DE 1

CSKCtrl.SetLanguage(GERMAN_DE);
```

CHANGE TRANSPARENCY

Description

Changes the transparency of Softkeyboard. Available values are from 10 up to 100.

Definition

```
bool CSKCtrl:: SetTransparency(int percent);
```

Usage

```
CSKCtrl. SetTransparency(transparency);
```

12.2 READ FRONTKEY STATUS FROM THE GENKEY SERVICE (C++ API)

FRONTKEY STATUS

Description

Read the current frontkey status. The frontkey status is an OR'ed flag combination of the keys pressed.

Definition

```
#define KEYSHIFT 0x10 // Fn
#define KEYPAGES 0x02 // V+
#define KEYLOCK 0x04 // V-
#define KEYMOUSE 0x08 // B+
#define KEYABC 0x01 // B-
bool CSKCtrl::GetKey (int *key);
```

Usage

```
CSKCtrl.GetKey (&key);
```