



Industrial PCs
PC evolution over several decades
implemented to suit industrial needs

adstec

the rugged world of IT®

You can rely on it For more than two decades ads-tec has constantly been offering state-of-the-art technology designed to meet industrial requirements. Today all of our products are developed in house, giving us the opportunity to properly act on all stages of development. It is very reassuring for all ads-tec clients that their PC supplier is even capable of adapting CPU boards or changing the BIOS in the source code, if required, over such a long period of time.

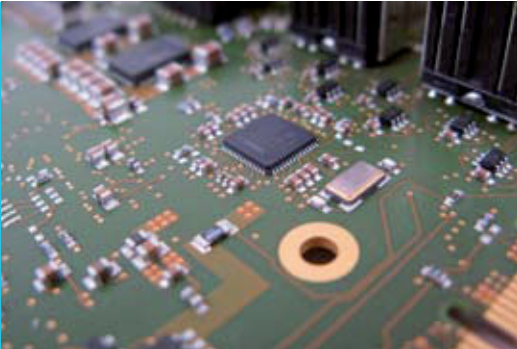
OTC5000 series / OPC5000 and OPC6000 series

IPC1000 series



BPC1000 series

adsX technology



adsX technology High tech made in Germany

- Use of components listed on the “long-term roadmaps” of microchip manufacturers in order to ensure unmodified delivery of these systems over several years
- 100% inhouse development ensures 100% support
- Soldered processors instead of using sockets

adsX CPU boards Proven ten thousand times

- Scalable processor technologies from Intel® Celeron® via Pentium® M to Core™2 Duo
- 32 and 64 bit architectures
- Up to 6 MB CPU cache
- Up to 1066 MHz FrontSideBus
- PCI and PCI Express®
- Graphic controllers up to Intel® GMA X4500, integrated in Intel® GS45, 256 MB of shared memory at max

adsX^{inside}



adsX²_{inside}



adsX base boards Adapted to the optimum

- Optimised for the required interfaces
- Adapted to the corresponding form factor

Blind Nodes



BPC1000 series The powerful computer/controller platform

Ideally suited for IPC solutions with remotely installed monitor, used as control platform or gateway, or for gathering data

- Without fans
- With robust aluminium extrusion profiles – protected and cooled
- From Intel® Celeron® M 800 MHz ULV to Pentium® M 1.4 GHz
- Windows® XP Professional on hard disk
- 2.5" Automotive hard disk
- 2 x Ethernet (10/100MBit) RJ 45;
1 x Ethernet (10/100/1000MBit) RJ 45

On request:

- Windows® CE 5.0 or Windows® XP embedded as a platform for embedded applications
- 1 x CompactFlash® memory slot (master), external access
- 1 x Fieldbus master and/or 1 x Sercos integrated
- NVRAM for remanent and fail-proof data storage during PLC cycles
- 12 digital inputs and 4 outputs onboard, electrically isolated



IPC1000 series Compact and versatile

- Applications from blind node to server
- Realisation of remote control concepts in connection with digital motors from ads-tec
- Without fans
- From Intel® Celeron® 800 MHz ULV to Pentium® M 1.8 GHz
- 2.5" Automotive hard disk, or 1 x CompactFlash® as an alternative memory slot (master) with external access
- COM 1, COM 2, COM 3 (RS232), 3 x USB
- 1 x PS/2 mouse, 1 x PS/2 keyboard, 1 x DVI
- 2 x Ethernet (10/100Mbit) RJ 45
- 1 x PCI slot

Thin Clients and Panel PCs



OTC5000 series **Focused on the essential**

- Perfectly suited for establishing cost optimised terminal and thin client solutions
- Without fans
- From Intel® Celeron® 800 MHz ULV to Pentium® M 1.4 GHz
- High quality industrial touchscreen and integrated ads-tec soft keyboard
- Displays from 12.1" to 17"
- 2.5" Automotive hard disk or alternatively:
1 x CompactFlash® memory slot (master), external access
- COM 1 (RS232), 1 x front USB, 2 x USB
- 1 x PS/2 mouse, 1 x PS/2 keyboard, 1 x DVI-A
- 1 x Ethernet (10/100Mbit) RJ 45



OPC5000 and OPC6000 series **Control and monitoring for experts**

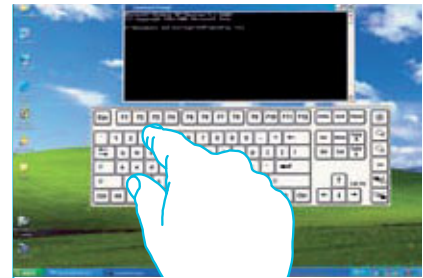
- Industrial PC series for front panel installation
- High quality industrial touchscreen and integrated ads-tec soft keyboard
- Displays from 12.1" to 19"
- From Intel® Celeron® M 800 MHz ULV over Pentium® M 1.8 GHz, up to Core™2 Duo 2.26 GHz
- Windows® XP Professional on hard disk or Windows® CE 5.0, respectively Windows® XP embedded as a platform for embedded applications
- 2.5" Automotive hard disk or 3.5" standard hard disk, or 1 x CompactFlash® slot (depending on the version)
- COM 1, COM 2, COM 3 (RS232), 1 x LPT, 3 x USB
- 1 x PS/2 mouse, 1 x PS/2 keyboard, 1 x DVI-A
- Up to 4 x Ethernet (10/100/1000Mbit) RJ 45, 3 of which are via managed switch
- Up to 3 PCI/ISA slots (shared) and 1 x PCI Express®

Extensions and optional additions



MSD series Remote control

- Monitor in enclosed casing from anodised aluminium, ideally suited for use as a remote control station in connection with blind nodes of the IPC1000 series
- 15" display including resistive industrial touchscreen
- Can be connected with any DVI/VGA interface
- Setup via front keys and OSD menu
- Brightness adjustment from the front
- Automatic picture expansion from VGA to full screen
- Installation by using built-in VESA 100 mm mounting holes
- Digital or analogue signal input
- Smooth surfaces can easily be cleaned

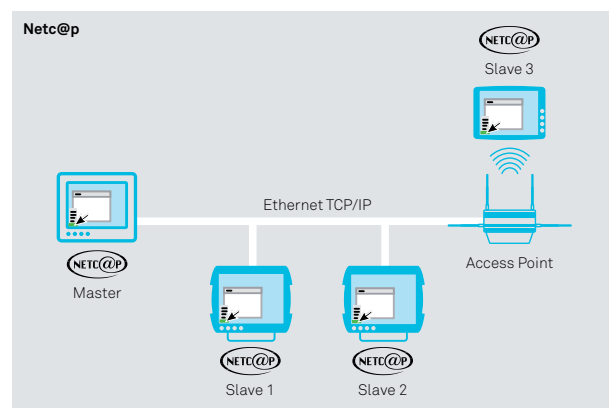


Soft keyboard Input the easy way

- The soft keyboard is available as early as during login dialogue
- You can switch between a full keyboard and a representation optimised for terminal emulations
- Size and included functions can simply be adapted depending on the application and requirements; both a numeric block as well as an alphanumeric keyboard can be put on display either individually or in combination
- Automatic storage of most recently used settings when the soft keyboard was shut down
- Different languages and/or matching keyboard layouts, selectable depending on the operating system used
- Additional setup options for colour adaptation or transparent mode
- API interface for controlling the keyboard from a customer application

Netc@p Being everywhere at the same time

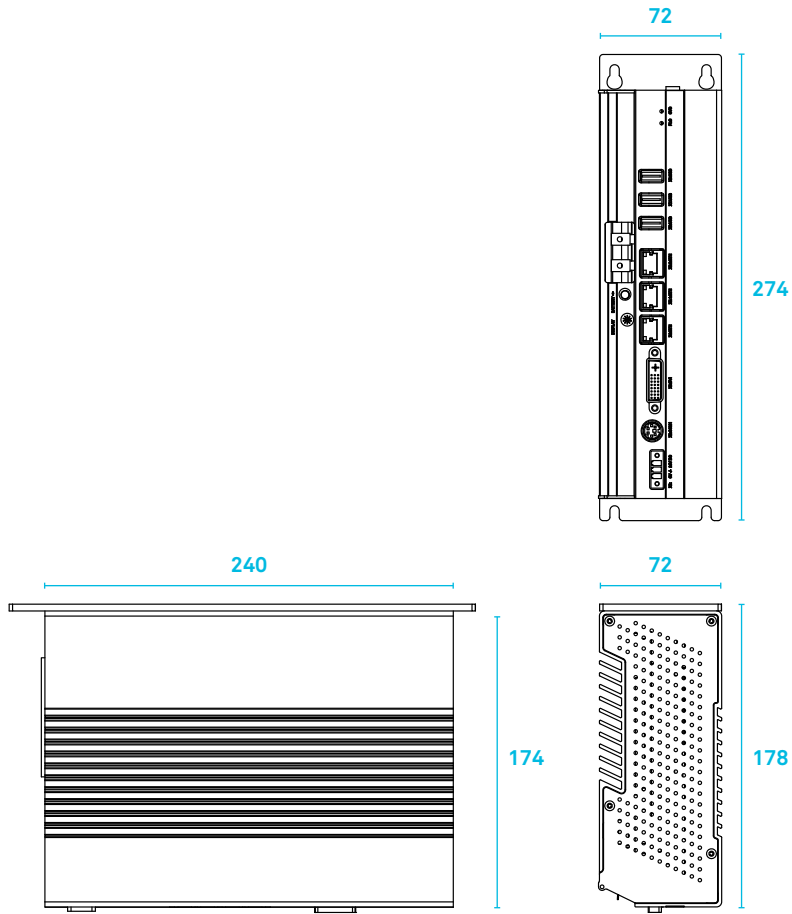
- Distributed multi-control architecture realised by providing keyboard, mouse and monitor signals via TCP/IP
- Secure access through control rights administration
- Comfortable support during commissioning and servicing if a tablet PC is used
- Centralised monitoring of several systems in "Multi slave mode"



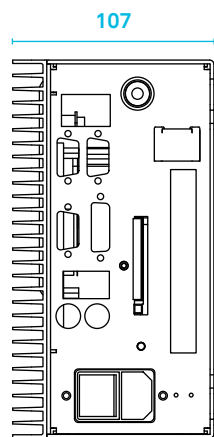
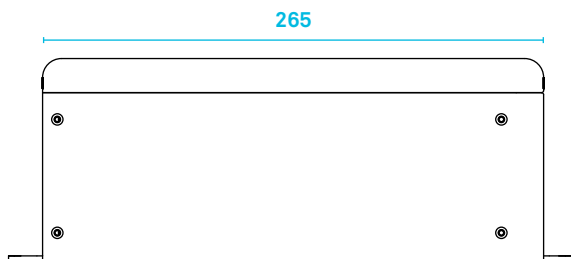
BPC1000 series and IPC1000 series – technical data

Device data

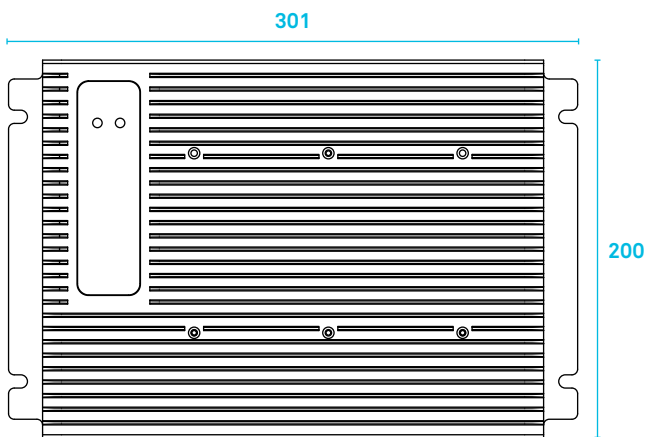
	BPC1000	IPC1100
Processor Intel®	Celeron® M 800 MHz ULV Pentium® M 1.4 GHz	Celeron® M 800 MHz ULV Celeron® M 1.0 GHz ULV Pentium® M 1.6 GHz Pentium® M 1.8 GHz
RAM	512 MB to 2 GB RAM	
Graphic controller	Intel® 855 GME Chipset	
Graphic memory	a maximum of 32 MB shared	a maximum of 64 MB shared
Mass storage device	2,5" automotive hard disk with a minimum of 40 GB (UDMA) Alternative: 1 x CompactFlash® memory slot (master), external access	
Interfaces	COM 1 (mini-DIN, programming interface) 3 x USB 2.0 1 x DVI-I Display resolution switch	COM 1 (RS232) COM 2 (RS232) COM 3 (RS232) 1 x PS/2 mouse 1 x PS/2 keyboard 1 x DVI-I 3 x USB 2.0
Slots		1 x PCI
Network	2 x Ethernet (10/100Mbit) RJ 45 1 x Ethernet (10/100/1000Mbit) RJ 45	2 x Ethernet (10/100Mbit) RJ 45
Power adapter	24 V DC +/-20% (19 to 29 V)	100 to 240 V AC, 60 W, ATX
Operating system	Windows® CE 5.0 or Windows® XP embedded as a platform for embedded applications Windows® XP Professional on hard disk	
Protection class	IP 20	
Operating temperature	0 to 55 °C	0 to 45 °C
Dimensions (W x H x D)	72 x 240 x 174 mm 72 x 274 x 178 mm incl. installation bracket	200 x 301 x 107 mm
Vibration resistance	DIN EN 60068-2-6	
Shock resistance	DIN EN 60068-2-27	
Humidity	10 to 85 % without condensation	
Feldbus Optionen	1 x Fieldbus master and/or 1 x Sercos, built-in ex factory 1 x Fieldbus master and/or – NVRAM for remanent and fail-proof data storage during PLC cycles – 12 digital inputs and 4 outputs onboard, electrically isolated	



BPC1000



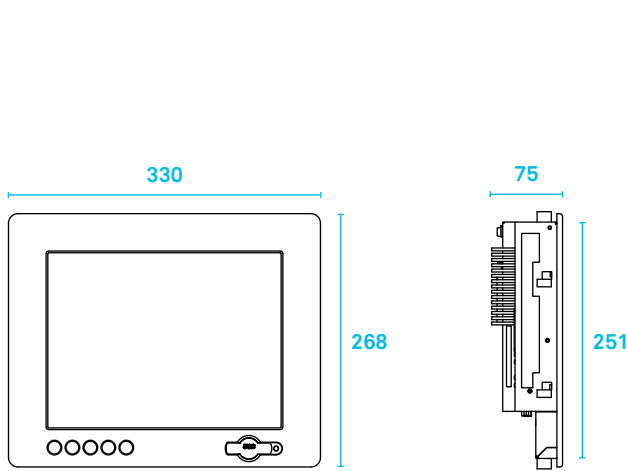
IPC1100



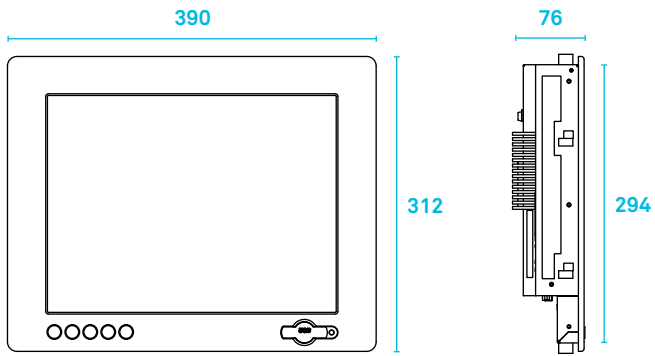
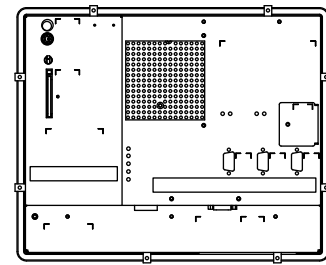
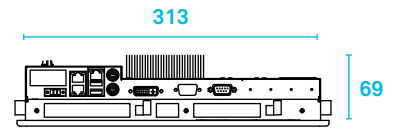
OTC5000 series – technical data

Device data

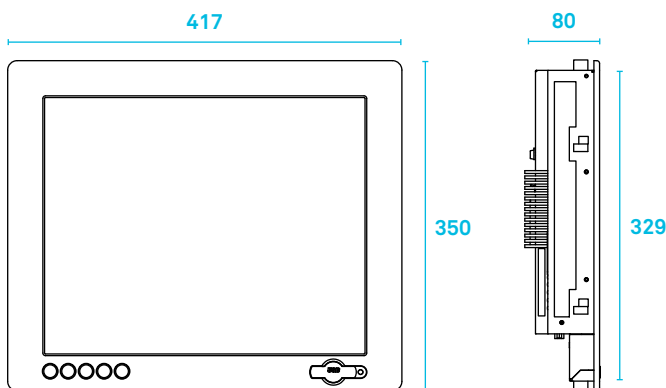
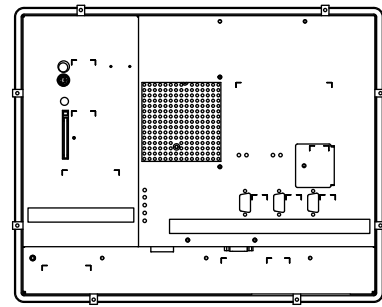
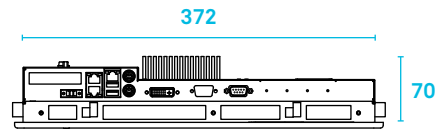
	OTC5012	OTC5015	OTC5017
Display	12.1" TFT	15" TFT	17" TFT
	Resolution 800 x 600 pixels	1024 x 768 pixels	1280 x 1024 pixels
	Represented colours 256k at max	16.1 million at max	16.7 million at max
Touch	Resistive industrial touchscreen		
Processor Intel®	Celeron® M 800 MHz ULV Celeron® M 1.0 GHz ULV Pentium® M 1.1 GHz		
RAM	512 MB to 2 GB RAM		
Graphic controller	Intel® 855 GME chipset		
Graphic memory	a maximum of 64 MB, shared		
Mass storage device	2,5" automotive hard disk with a minimum of 40 GB (UDMA) Alternative: 1 x CompactFlash® slot		
Interfaces	COM 1 (RS232) PS/2 mouse PS/2 keyboard 1 x DVI-A 2 x USB 2.0		
Network	1 x Ethernet (10/100MBit) RJ 45		
Power adapter	24 V DC +/-20% (19 to 29 V)		
Operating system	Windows® CE 5.0 or Windows® XP embedded as a platform for thin client applications Windows® XP Professional on hard disk as an open solution		
Protection class	Front: IP 65		
Operating temperature	0 to 45 °C		0 to 40 °C
Dimensions (W x H x D)	330 x 268 x 75 mm	390 x 312 x 76 mm	417 x 350 x 80 mm
Installation recess (W x H)	318 x 256 mm	376 x 299 mm	403 x 334 mm
Vibration resistance	DIN EN 60068-2-6		
Shock resistance	DIN EN 60068-2-27		
Humidity	10 to 85% without condensation		



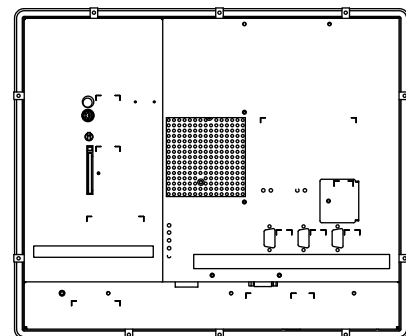
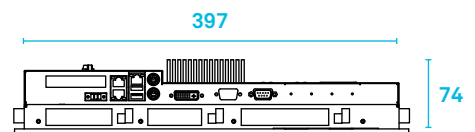
OTC5012



OTC5015



OTC5017



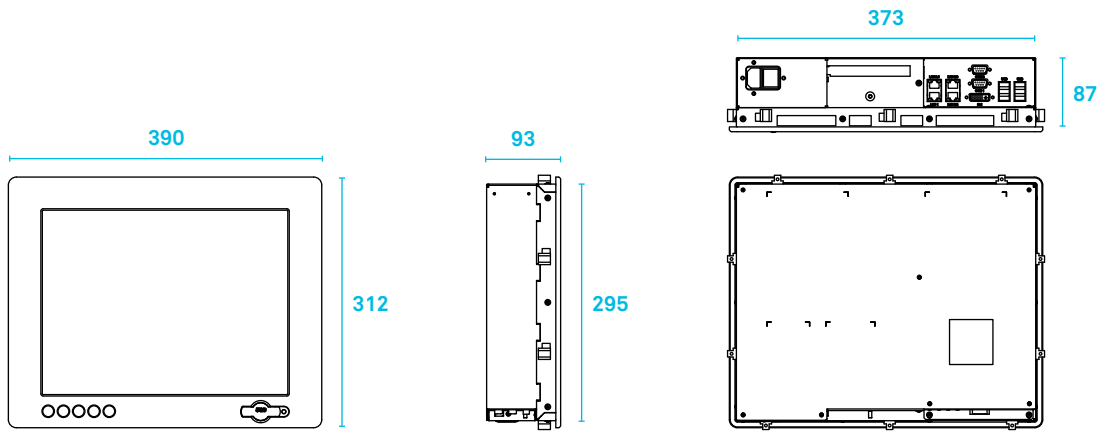
OPC6000 and OPC5000 series – technical data

Device data

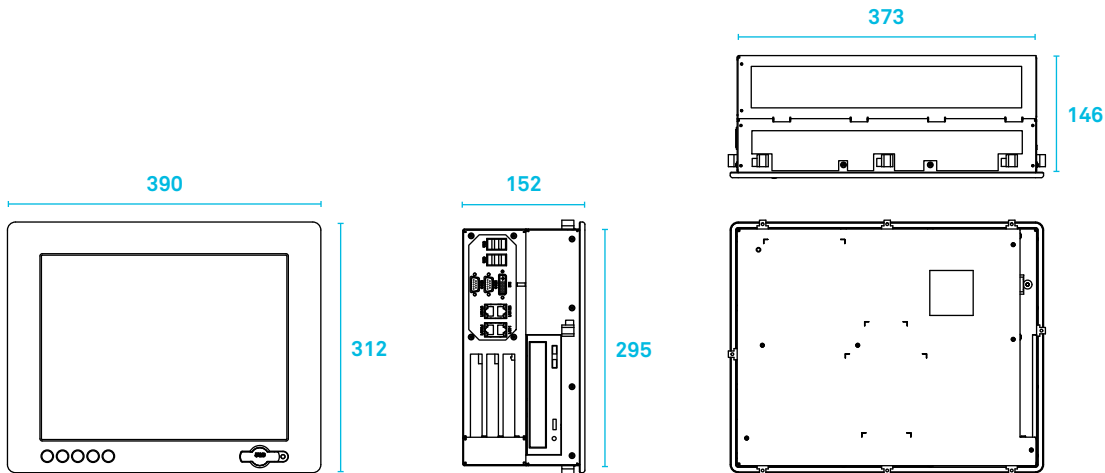
	OPC6115	OPC6315	OPC5112
Display	15" TFT		12.1" TFT
Resolution	1024 x 768 pixels		800 x 600 pixels
Represented colours	16.1 million at max		256k at max
Touch	Resistive industrial touchscreen		
Processor Intel®	Celeron® 1.2 GHz ULV (Dual Core) Core™2 Duo 2.26 GHz		Celeron® M 800 MHz ULV Celeron® M 1,0 GHz ULV Pentium® 1.4 GHz
RAM	1 GB to 4 GB DDR3 RAM		512 MB to 2 GB DDR RAM
Graphic controller	Intel® GMA X4500 integrated in Intel® GS45		Intel® 855 GME chipset
Graphic memory	a maximum of 256 MB shared		a maximum of 64 MB shared
Mass storage device	2.5" hard disk a min. of 120 GB (SATA)	3.5" hard disk a min. of 160 GB (SATA) DVD burner	2.5" automotive hard disk a min. of 40 GB (UDMA) alternative: 1 x CompactFlash® slot
Interfaces	COM 1 (RS232) COM 2 (RS232) 6 x USB 2.0 1 x DVI-I		COM 1 (RS232) COM 2 (RS232) COM 3 (RS232) 1 x LPT 1 x PS/2 mouse 1 x PS/2 keyboard 1 x DVI-A 3 x USB 2.0
Slots	1 x PCI	2 x PCI 1 x PCI Express® (1 Lane)	1 x PCI/ISA shared
Network	1 x Ethernet (10/100/1000MBit) RJ 45 3 x Ethernet (10/100/1000MBit) RJ 45 via managed switch		2 x Ethernet (10/100MBit) RJ 45
Power adapter	90 to 264 V AC, 150 W, ATX As an option: 24 V DC +/-20% (19 bis 29V)		90 to 132/180 to 264 V AC, 60 W, AT
Operating system	Windows® XP Professional on hard disk embedded operating systems on request		
Protection class	Front: IP 65		
Operating temperature	5 to 45 °C		0 to 45 °C
Dimensions (W x H x D)	390 x 312 x 93 mm	390 x 312 x 152 mm	330 x 268 x 94 mm
Installation recess (W x H)	376 x 299 x mm	376 x 299 mm	318 x 256 mm
Vibration resistance	DIN EN 60068-2-6		
Shock resistance	DIN EN 60068-2-27		
Humidity	10 to 85 % without condensation		

Device data

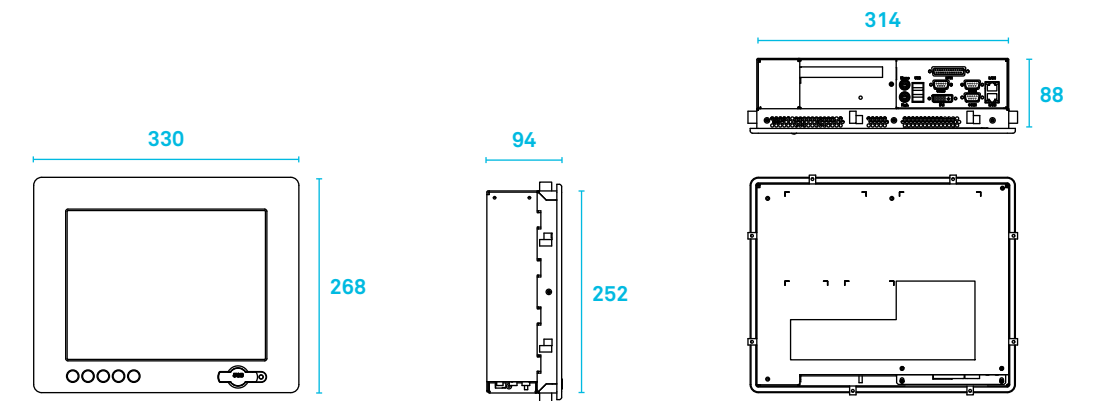
	OPC5115	OPC5117	OPC5315	OPC5319	
Display	15" TFT	17" TFT	15" TFT	19" TFT	
	Resolution	1024 x 768 pixels	1280 x 1024 pixels	1024 x 768 pixels	1280 x 1024 pixels
	Represented colours	16.1 million at max	16.1 million at max	16.1 million at max	16.1 million at max
Touch	Resistive industrial touchscreen				
Processor Intel®	Celeron® M 800 MHz ULV Celeron® M 1.0 GHz ULV Pentium® 1.6 GHz Pentium® 1.8 GHz				
RAM	512 MB to 2 GB DDR RAM				
Graphic controller	Intel® 855 GME chipset				
Graphic memory	a maximum of 64 MB shared				
Mass storage device	2,5" automotive hard disk a min. of 40 GB (UDMA) alternative: 1 x CompactFlash® slot		3,5" hard disk a min. of 160 GB (UDMA) 3,5" floppy disk drive, DVD burner		
Interfaces	COM 1 (RS232) COM 2 (RS232) COM 3 (RS232) 1 x LPT 1 x PS/2 mouse 1 x PS/2 keyboard 1 x DVI-A 3 x USB 2.0				
Slots	1 x PCI/ISA shared		2 x PCI/ISA shared 1 x PCI		
Network	2 x Ethernet (10/100MBit) RJ 45				
Power adapter	90 to 260 V AC, 85 W, ATX As an option: 24 V DC +/-20% (19 to 29 V)		90 to 264 V AC, 150 W, ATX As an option: 24 V DC +/-20% (19 to 29 V)		
Operating system	Windows® XP Professional on hard disk embedded operating systems on request				
Protection class	Front: IP 65				
Operating temperature	0 to 45 °C		5 to 45 °C		
Dimensions (W x H x D)	390 x 312 x 94 mm	417 x 350 x 94 mm	390 x 312 x 154 mm	457 x 382 x 155 mm	
Installation recess (W x H)	376 x 299 mm	403 x 334 mm	376 x 299 mm	443 x 368 mm	
Vibration resistance	DIN EN 60068-2-6				
Shock resistance	DIN EN 60068-2-27				
Humidity	10 to 85% without condensation				



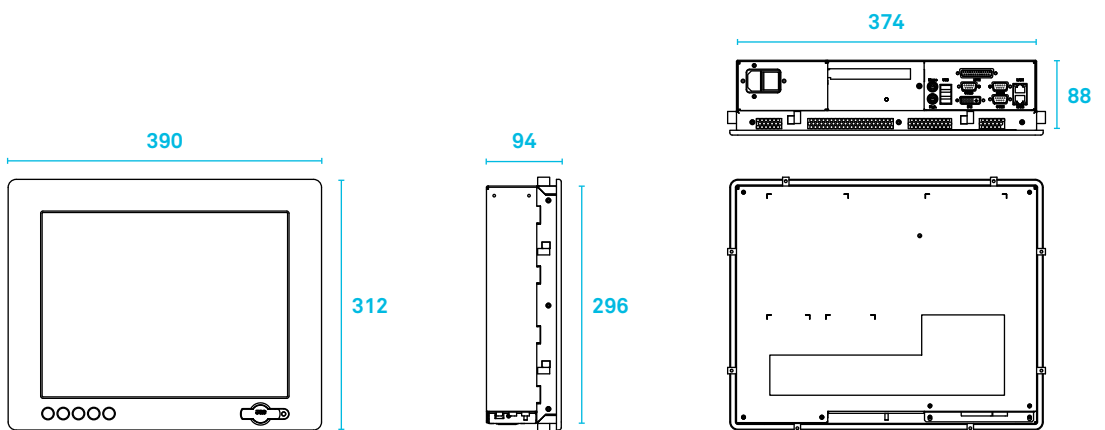
OPC6115



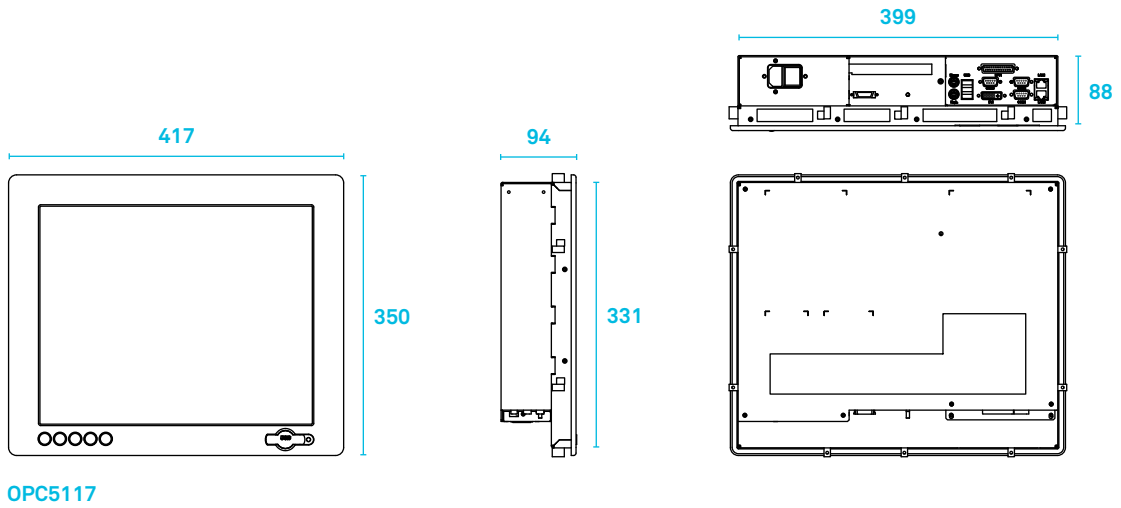
OPC6315



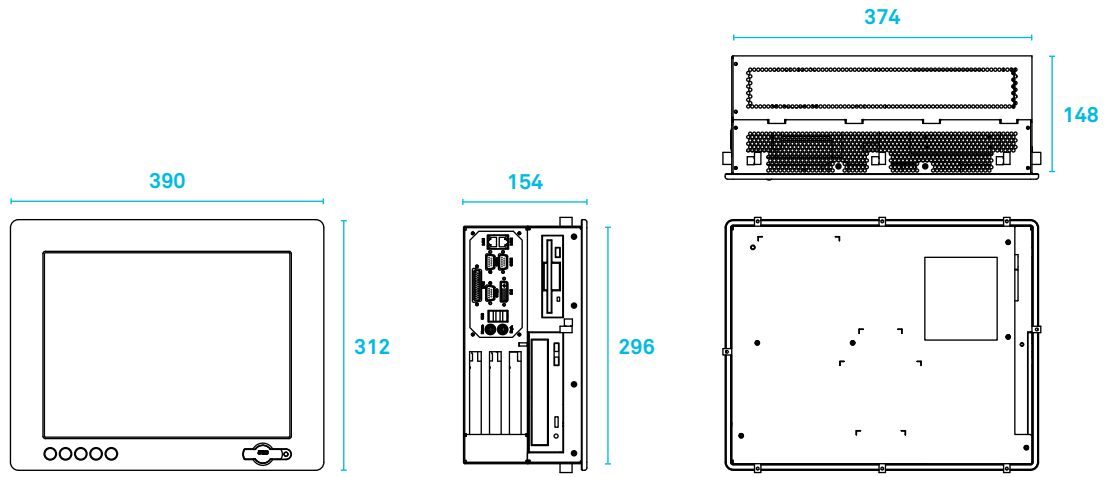
OPC5112



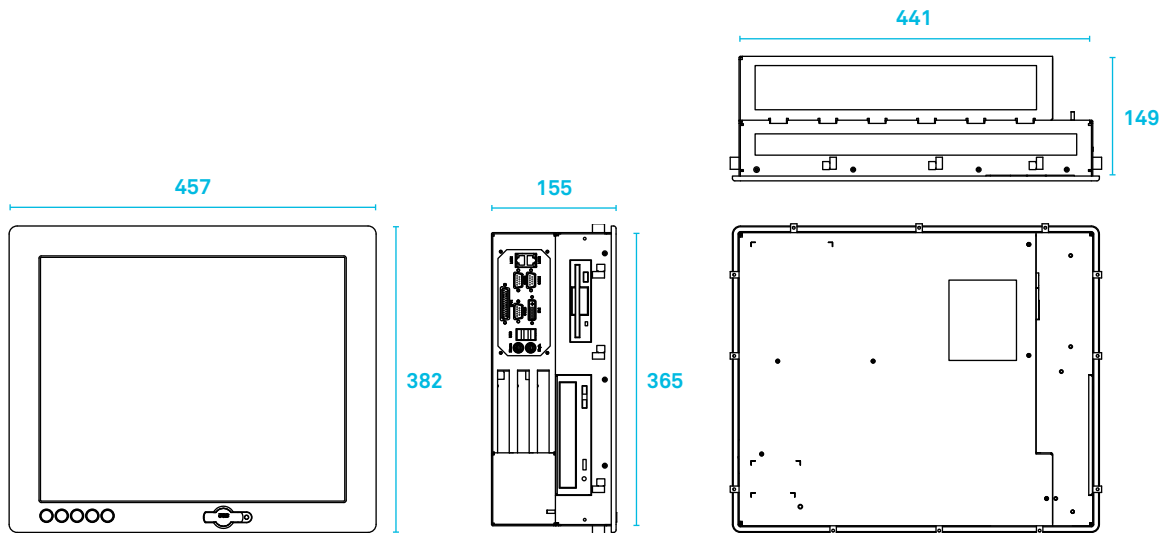
OPC5115



OPC5117



OPC5315



OPC5319

Product portfolio

Tablet PCs

IT Infrastructure

Terminals

Industrial PCs

ads-tec GmbH
Raiffeisenstraße 14
70771 Leinfelden-Echterdingen
Telefon +49 711 45894-600
Telefax +49 711 45894-992
sales@ads-tec.de
www.ads-tec.de



the rugged world of IT®