



User Manual

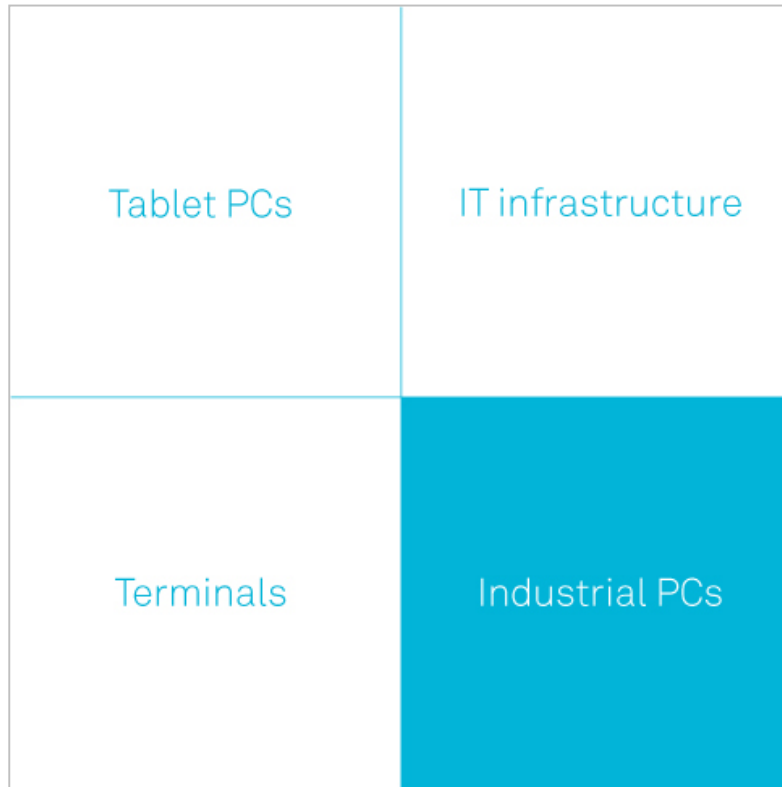
Industrial PCs

OPC601 2/601 5



the rugged world of IT®

Product Portfolio



Copyright
© ads-tec GmbH
Raiffeisenstr.14
D-70771 Leinfelden-Echterdingen
Germany

INDEX

ABOUT US	5
1 REMARKS	6
1.1 RELEVANT DOCUMENTATION FOR THE DEVICE	6
1.2 EXPLANATION OF USED SYMBOLS	6
1.3 DATA, FIGURES AND MODIFICATION	7
1.4 TRADE MARKS	7
1.5 COPYRIGHTS.....	7
1.6 ENVIRONMENTAL CONDITIONS	8
1.7 STANDARDS.....	8
1.8 EQUIPMENT VERSIONS.....	9
1.9 SCOPE OF DELIVERY	9
2 OPERATING INSTRUCTIONS	10
2.1 OPERATING LOCATION.....	10
2.2 DAMAGE DUE TO IMPROPER USE	11
2.3 WARRANTY / REPAIR.....	11
2.4 TREATMENT AND DISPOSAL OF LITHIUM BATTERIES	11
2.5 NOTES ON SAFETY	12
3 MOUNTING	13
3.1 EXTERNAL DEVICE DIMENSIONS FOR OPC6012.....	13
3.1 INSTALLATION LAYOUT FOR OPC6012	14
3.2 EXTERNAL DEVICE DIMENSIONS FOR OPC6015.....	15
3.3 INSTALLATION LAYOUT FOR OPC6015	16
4 COMMISSIONING	17
4.1 AVAILABLE INTERFACES.....	17
4.2 CHECK FOR OPERATIONAL READINESS	17
5 OPERATION	18
5.1 FRONT CONTROL KEYS.....	18
5.2 SOFT KEYBOARD	19
5.3 STATUS INDICATORS	20
5.4 TOUCH SCREEN.....	20
6 INTERFACES	21
6.1 INTERFACE SETUP.....	21
6.2 24V DC POWER SUPPLY.....	21
6.1 SPEAKERS	23
6.2 USB CONNECTIONS	24
6.3 PS/2 CONNECTOR	25
6.4 NETWORK CONNECTION (RJ45)	26
6.5 SERIAL COM INTERFACE (RS232)	27
7 DRIVES	28
7.1 HARD DRIVE / FLASH SSD.....	28
7.2 EXTERNAL DRIVES	28
8 SOFTWARE & DRIVER INSTALLATION	29

8.1	INSTALLING THE OPERATING SYSTEM	29
8.2	TOUCH SCREEN DRIVER INSTALLATION	30
8.3	CONFIGURATION CENTER.....	31
8.4	AUTOMATIC BRIGHTNESS ADAPTATION	32
8.5	USB LOCK FUNCTION	34
8.6	ON / OFF PUSHBUTTON CONFIGURATION	35
8.7	EXEMPLARY RFID APPLICATION.....	36
8.8	SOFT KEYBOARD.....	37
8.9	SCREEN MOB.....	37
8.10	SOFT KEYBOARD INSTALLATION	38
9	TECHNICAL DETAILS.....	39
10	SERVICE AND SUPPORT.....	40
10.1	ADS-TEC SUPPORT.....	40
10.2	COMPANY ADDRESS	40
11	CE CONFORMITY DECLARATION.....	41

ABOUT US

ads-tec GmbH
Raiffeisenstr. 14

D-70771 Leinfelden-Echterdingen
Phone: +49 711 45894-0
Fax: +49 711 45894-990
www.ads-tec.com



As a supplier of high tech equipment, ads-tec supports large enterprises and globally operating groups of companies with state-of-the-art technology, know how that is always up to date and delivery of comprehensive services in the area of automation, data and system technology.



ads-tec puts entire solutions for automation into practice - from the planning to the commissioning - and has particularly specialised in manipulation and material manipulation technology.



The Data Technology division develops and manufactures PC based solutions and holds a wide range of industrial PCs, thin clients and embedded systems available.



ads-tec has specialised in the adaptation and optimisation of operational systems and develops software tools to complement the offered hardware platforms.

1 REMARKS

1.1 RELEVANT DOCUMENTATION FOR THE DEVICE

The following documents are essential for setting up and operating this device:

USER MANUAL (THIS DOCUMENTATION):

Contains information for installation, commissioning and operating the device along with technical data of the device hardware.

WEBSITE

By using the website www.ads-tec.de, you can download drivers, software, user manuals, leaflets and flyers from the **Download** section on the website.



Note:

We would recommend to make use of our website contents (www.ads-tec.de) in order to ensure an optimised data quality and to be quickly and comprehensively informed of any technical modification.

SERVICE CD:

Contains drivers and user manuals.



Note:

The service CD menu automatically starts if the autostart option for removable media is activated.

The service CD was created by using Adobe Flash. The service CD menu is even available if the Flash Player is not installed.

1.2 EXPLANATION OF USED SYMBOLS



Warning:

The "Warning" symbol refers to activities which could cause personal injury or damage to the hardware and software!



Note:

The "Note" symbol describes conditions which unconditionally have to be observed in order to ensure trouble-free operation. Additionally, hints and advice for the efficient use of this device and for software optimisation are given using this symbol.

1.3 DATA, FIGURES AND MODIFICATION

All texts, data and figures are non-binding. All these materials are subject to modification due to technological progress. Our products comply with all provisions and requirements of the legislation at that point in time when the products leave our company premises. The operator/operating company bears sole responsibility for the compliance with any consecutive new technological development or adherence to any consecutive new legislative provision, as well as for the observance of their obligation as the operator/operating company.

1.4 TRADE MARKS

We would like to emphasise that all names of hardware and software products used in this documentation, as well as all brand names of corresponding companies are subject to the general copyrights of the intellectual property in terms of trademarks, brand names and patents.

Windows[®], Windows[®] CE are registered trademarks of Microsoft Corp.

Intel[®], Pentium[®], Atom[™], Core[™]2, are registered trademarks of Intel Corp.

IBM[®], PS/2[®] and VGA[®] are registered trademarks of IBM Corp.

CompactFlash[®] is a registered trademark of the Compact Flash Association.

RITTAL[®] is a registered trademark of Rittal Werk Rudolf Loh GmbH & Co. KG.

Any other national and international trademarks and product names shall hereby also be recognised.

1.5 COPYRIGHTS

This manual including all contained figures is protected by copyright law. Any use of this manual by a third party in non-compliance with the international copyright law shall hereby be prohibited. Any reproduction, translation and electronic or photographic archiving or modification requires previous written agreement by ads-tec GmbH.

In the event of non-compliance, you shall be obliged to compensate for damages.

1.6 ENVIRONMENTAL CONDITIONS

The device may be operated under the following conditions. Failure to observe these specifications will terminate any warranty for this device. Ads-tec cannot be held liable for any damages arising due to improper use and handling.

- Temperature

in operation	-20 ... 55°C
for storage	-30 ... 60°C

- Humidity:

In operation	10 ... 85% without condensate
For storage	10 ... 85% without condensate

- Vibration resistance

Standard	EN 60068-2-6 / 1 G, 10 ... 150 Hz
Additionally applies	MIL-STD 810F (01.2000), annex C., figure 514.5C (US highway truck transportation)

- Shock resistance

Standard	EN 60068-2-27 / 5 G, with a half-wave of 11 ms duration
----------	---------------------------------------------------------

1.7 STANDARDS

This device complies with the requirements and protective aims of the following EC regulations:

- This device meets the test requirements for granting the CE sign according to the European test standards EN 61000-6-4 and EN 61000-6-2.
- This device complies with the test requirements in accordance with DIN EN 60950 (VDE0805, IEC950) "Safety of Information Technology Equipment"
- The device meets the DIN EN 60068-2-6 test requirements (sinus excitation).
- The device meets the DIN EN 60068-2-27 test requirements (shock resistance test).



Note:

All connected components, as well as cable connections must also meet these requirements for compliance with the EMC legislation. For this reason, screened bus and LAN cables including screened connectors must be used and installed according to the instructions in this user manual.

**Note:**

By using the CE conformity declaration in this document, you can find detailed information about the standards applicable to this device.

**Warning:**

This is equipment of class A. This unit might cause radio interferences in living areas; in this case the operator might be obliged to take suitable protective measures at the operator's expense."

1.8 EQUIPMENT VERSIONS

The system is available in two equipment versions:

Platform including a Flash SSD:

Platform without any rotating mass storage medium (hard disc, etc.) and with an embedded operating system (Windows CE 6.0 / XP embedded) for stationary use with a standard Ethernet.

Platform including a hard disc:

Equipped with a hard disc for stationary use, e.g. in the manufacturing department using a standard operating system.

1.9 SCOPE OF DELIVERY

Please check that all of the following components are contained in the packaging:

- 1 x device
- 4-pin Lead-through connector from Phoenix Contact
- Service CD

Optional delivery scope

- Operating system

2 OPERATING INSTRUCTIONS

This device contains electrical voltages and extremely sensitive components. The manufacturer, or a service partner authorised by the manufacturer, should be consulted if you plan to make any modifications. For this type of work, the device must be switched off at the mains and the power lead must be disconnected. Suitable measures for avoiding electrostatic discharge towards parts of the components when touching the equipment must be taken. If the device is opened by an unauthorised person, hazards for the user might arise and any warranty claim will cease.

General instructions:

- All users must read this manual and have access to it at all times.
- Installation, commissioning and operation may only be carried out by trained and qualified staff.
- The security instructions and the manual itself must be observed by all persons who work with this device.
- At the location of use the valid guidelines and regulations for accident prevention must be observed.
- The manual contains the most important instructions on how to use this device in a safe way.
- Appropriate storage, proper transport, installation and commissioning, as well as careful operation are prerequisites for ensuring safe and proper operation of the device.
- The device can be cleaned by using a soft cloth and a commercially available glass cleaning agent (e.g. Sidolin) with low alcohol content.

**Warning:**

Any leads (e.g. power leads, interface cables) may only be connected if the device is switched off in order to avoid damaging the device.

2.1 OPERATING LOCATION

The control system is designed for use inside a switching cabinet. You must ensure compliance with the specified environmental conditions. Using the device in non-specified environments, for example on board ships, or in areas that might contain explosive gases, or in extreme heights is prohibited.

**Warning:**

The device may only be switched on after acclimatising to the ambient temperature in order to avoid condensate accumulation. The same applies if the device has previously been exposed to extreme temperature variations.

To avoid overheating in operation: The device must not be exposed to direct radiation by sunlight or any other light or heat source.

2.2 DAMAGE DUE TO IMPROPER USE

If the control system shows any obvious damage, e.g. caused by improper operating or storage conditions or by improper use or handling, you must immediately put the device out of operation and protect it from being accidentally switched on.

2.3 WARRANTY / REPAIR

During the warranty period, any repair must be carried out by the manufacturer or by persons duly authorised by the manufacturer only.

2.4 TREATMENT AND DISPOSAL OF LITHIUM BATTERIES

This device contains a lithium battery for supplying the system clock with power as long as the supply voltage is not connected. The battery has a life cycle of 3 - 5 years depending on which load is applied.



Note:

The more the battery is exposed to higher temperatures, the faster it ages.



Warning:

There is an acute risk of explosion should the wrong type of battery be used.



Warning:

Do not put lithium batteries into a fire, do not solder on the cell body, do not recharge them, open them, short-circuit them, do not reverse their polarity or heat them up over 100°C; dispose of them properly and protect lithium batteries from direct sun light, humidity and condensation.

Lithium batteries may only be replaced by the same type, or by a type recommended by the manufacturer.

The lithium battery must be disposed of according to the local legislation at the end of its life cycle.

2.5 NOTES ON SAFETY

**Warning:**

Installation works at the device are only permitted if the device is disconnected from the power supply and protected from accidental switch-on.

**Note:**

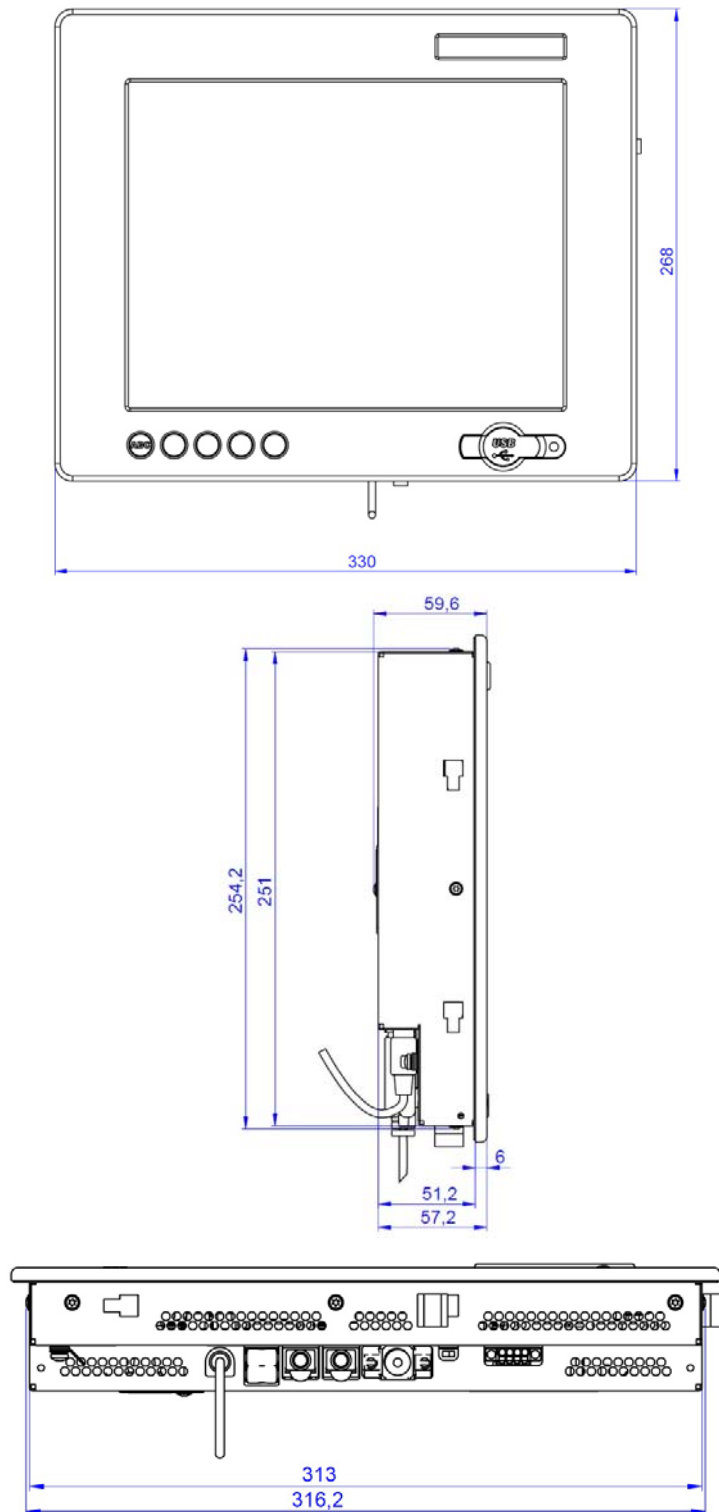
Always adhere to the safety measures applicable when handling components at risk of being destructed by electrostatic discharges.

(EN 61340-5-1 / EN 61340-5-2)

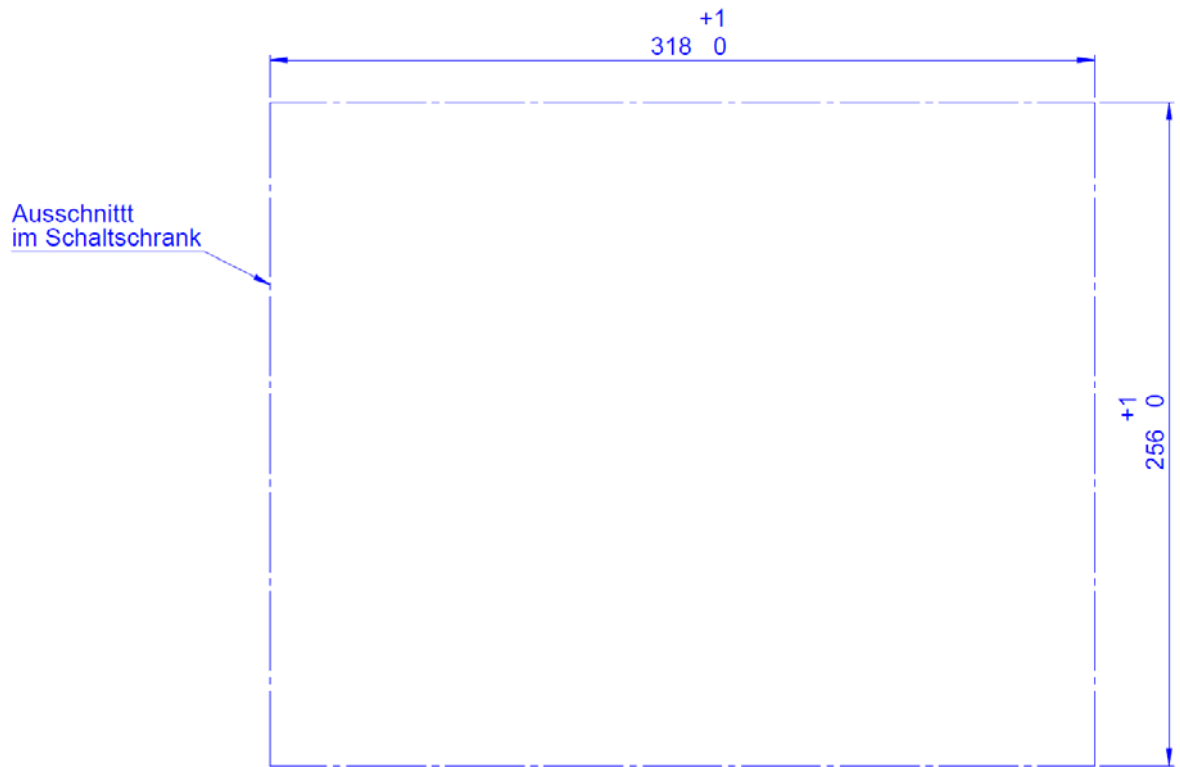


3 MOUNTING

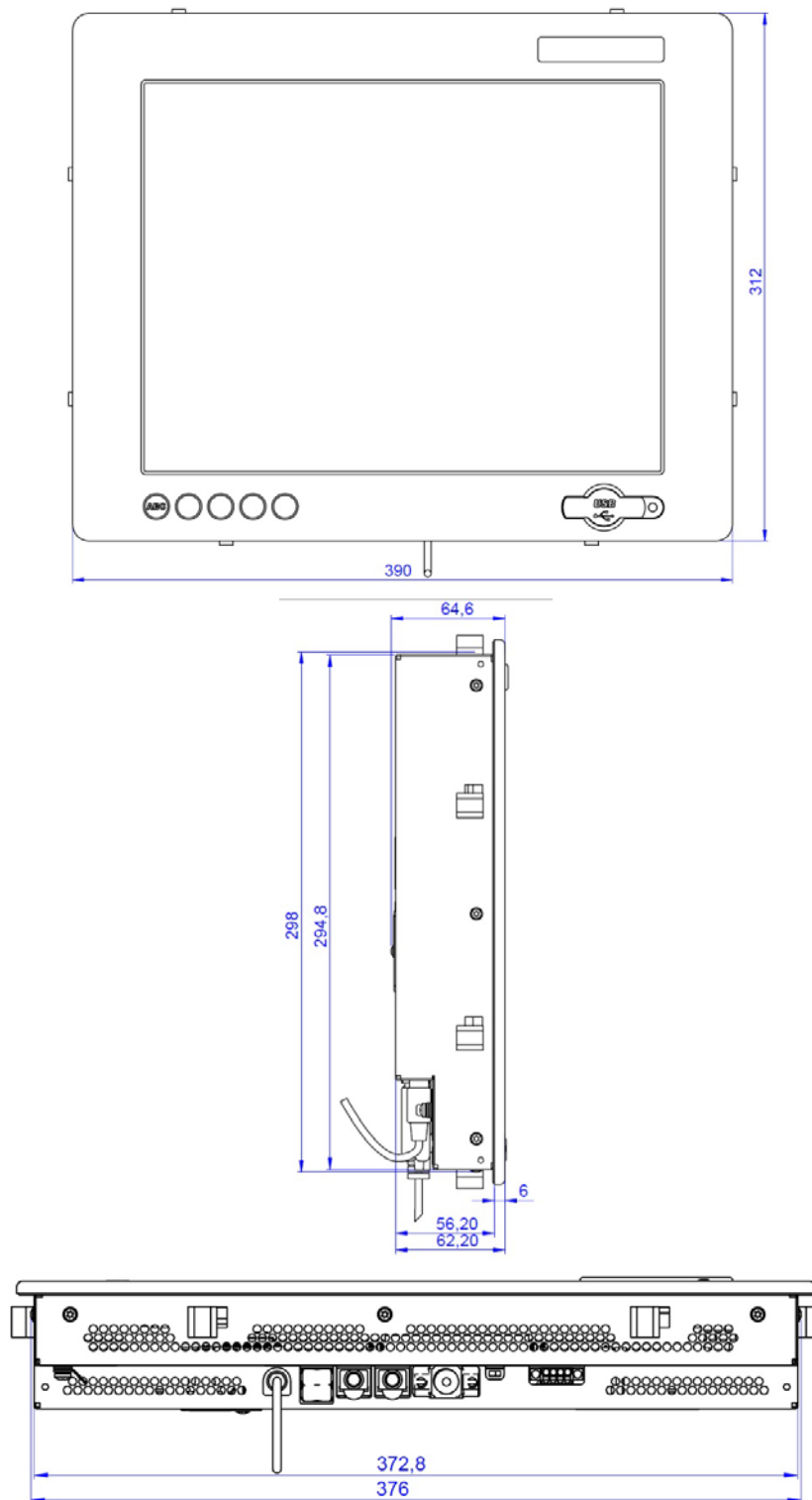
3.1 EXTERNAL DEVICE DIMENSIONS FOR OPC6012



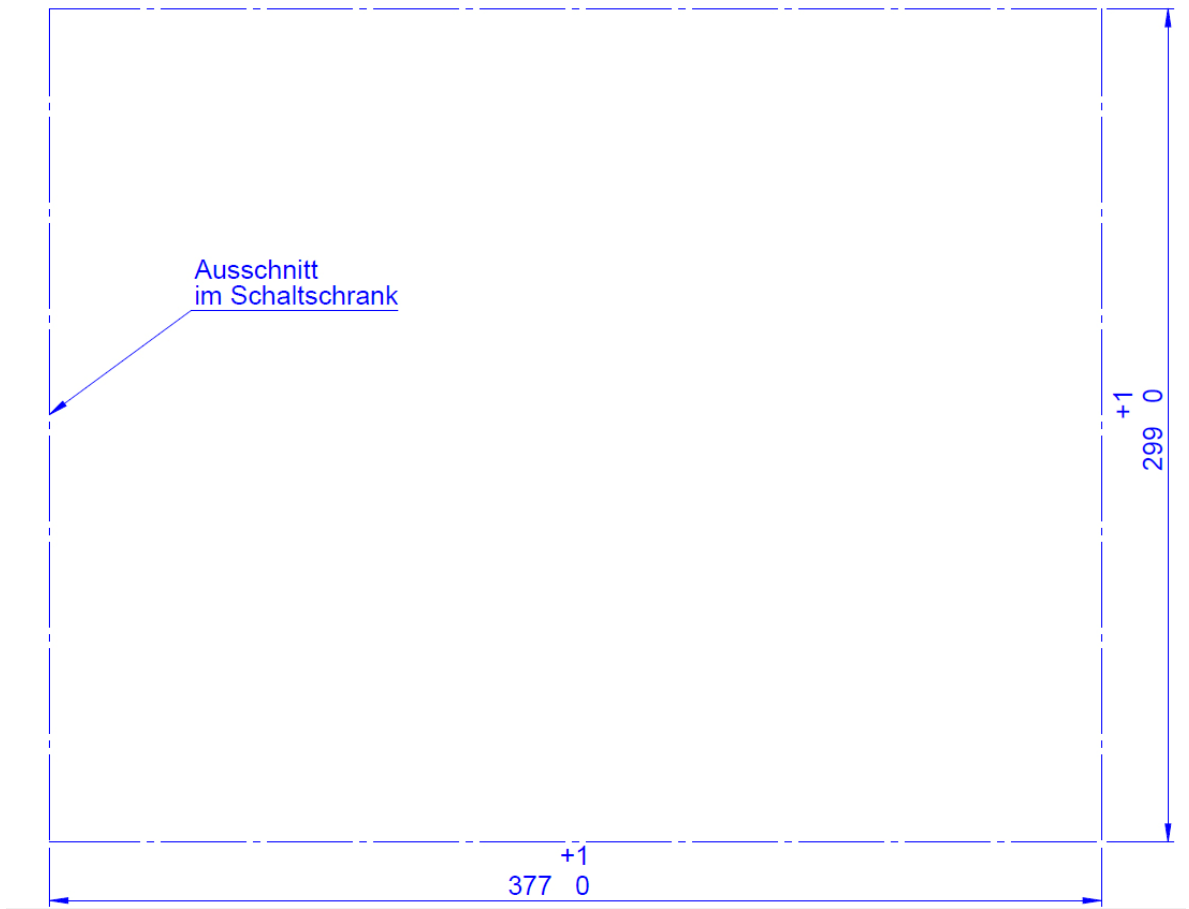
3.1 INSTALLATION LAYOUT FOR OPC6012



3.2 EXTERNAL DEVICE DIMENSIONS FOR OPC6015



3.3 INSTALLATION LAYOUT FOR OPC6015



4 COMMISSIONING

The power supply connection and interfaces of this device are installed underneath a protective cover. This cover has to be removed in order to connect the power supply lead and the interface cables.

All supply leads and all required data leads have to be connected before commissioning. All supply leads and all required data leads have to be connected before commissioning.



Warning:

The device must be switched off before connecting or disconnecting any cables in order to prevent damage to the electronics!

The device may only be switched on after acclimatising to the ambient temperature in order to avoid condensate accumulation. Make sure to meet the permissible voltage requirements for this device.

After switching off and before switching on you must wait for at least 5 seconds.

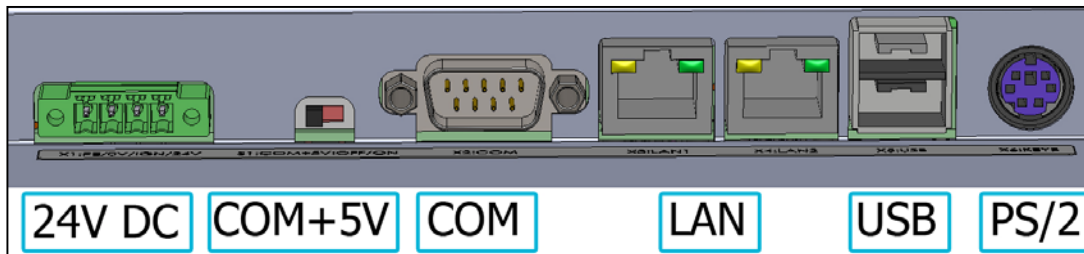


Note:

The screen of a data cable must always be connected with the connector housing (EMC).

Under the embedded operating system, interfaces must explicitly be enabled and required drivers must be installed in order to be able to use them.

4.1 AVAILABLE INTERFACES



Note:

If the case is connected with earth potential at the provided PE contact (e.g. by connecting the PE contact with the device plug), the electrical insulation is no longer given. This also applies if the device is installed by using a metal retainer clip.

If you want to have the device electrically insulated from the power supply, you have to use a method of installation that ensures appropriate insulation.

4.2 CHECK FOR OPERATIONAL READINESS

Check the device for any hidden damage potentially caused by improper transport, operating or storage conditions or by improper use or handling (e.g. smoke development from the device, etc.). If any damage is detected, the device must be put out of service immediately and protected from accidental switch-on.

5 OPERATION

5.1 FRONT CONTROL KEYS

Depending on the device equipment version, an operating system (Windows CE.net, Windows XP embedded or Windows XP Prof.) and a soft keyboard are already installed ex factory. The keys on the front panel are occupied with the following functions by a specific driver in the soft keyboard:



Level 1:

Activate and deactivate the soft keyboard for letter/character input using the touch screen.

Level 2:

Decrease display brightness



Level 1:

Change task (Alt+ESC) in Windows.

Level 2:

Increase display brightness



Level 1:

Not connected

Level 2:

The volume can be decreased with devices equipped with an audio output.



Level 1:

Right mouse-key function

Level 2:

The volume can be increased with devices equipped with an audio output



Shift key (SHIFT) for activating the second keyboard level. This key must be pressed simultaneously with the desired function key



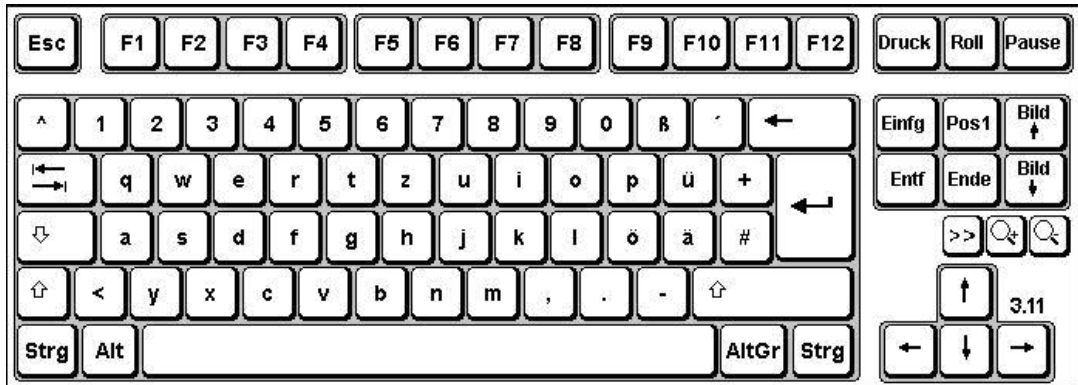
Note:

If the software keyboard is not installed, only the functions for display settings and volume control are active. The controller display will not be output on the display, in this case.

The key functions can be modified in accordance with customer specific requirements. Above described functions are pre-set ex works.

5.2 SOFT KEYBOARD

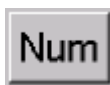
If an operating system is installed ex works, the soft keyboard is also preinstalled. If the operating system is delivered separately with the device, the soft keyboard must also be installed on site. By using the soft keyboard, data can be entered via the touch screen like with an external keyboard.



HOW TO OPERATE THE SOFT KEYBOARD FROM VERSION 3.11:



Activate and deactivate the soft keyboard for letter/character input using the touch screen



Switches numeric keys on and off (only if numeric keys are visible)



Switching between different representations (Alphanumeric keys → Numeric keys → Function key bar)



Soft keyboard representation, zoom in



Soft keyboard representation, zoom out



Note:

If a function is to be activated, which requires pressing two keys at the same time (e.g. Alt + F4), these keys have to be pushed one after another at the soft keyboard, and the special keys Shift, Alt and Ctrl must always be pushed first.

Due to differences in programming of a large variety of software, we cannot ensure that the soft keyboard works properly with all software programmes. When deactivating the soft keyboard, the previously active state (alphanumeric / numeric keys or function keys) will be stored and will be displayed when re-activating the keyboard.

5.3 STATUS INDICATORS

SYS LED (BICOLOURED)

Depending on the colour and type of flashing, different device states are displayed by the SYS LED.

The following signals are displayed:

- LED lights green The device is ready for operation (Power ON).
- LED is off The device is switched off. (POWER OFF)

5.4 TOUCH SCREEN

The control system is equipped with a touch screen monitor. The touch screen monitor is internally connected with the USB interface. The driver software required for using the touch screen is integrated in the corresponding operating system, or can alternatively be installed from the enclosed service CD.

6 INTERFACES

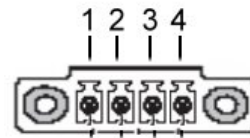
6.1 INTERFACE SETUP

INTERFACE	IRQ	ADDRESS
COM1	4	3F8h
COM2 (Touch)	3	2F8h

6.2 24V DC POWER SUPPLY

The supply voltage is provided via a lead-through terminal including a screw connection (Phoenix Contact COMBICON MC 1,5/4-STF3.81). (The figure shows the socket inside the device)

PIN-NUMBER	SIGNAL NAME
1	PE
2	0V DC
3	NC
4	24V DC



Voltage tolerance

- Input voltage: 24 V DC \pm 20%.

Current consumption

The current consumption of this device depends on the equipment version (e.g. if a heater or WLAN, etc. is installed.)

- Switch-on current: 7A (1ms)
- Standby current consumption: 0.25mA
- Regular operation: 1.3A without heater (without any additional load on the USB ports and without delivering the +5V supply for the scanner)



Note:

The power supply can be protected with a slow-blow fuse of up to 4A.



Note:

The typical power consumption of this device is indicated in the "Technical details" chapter.



Note:

If the case is connected with earth potential at the provided PE contact (e.g. by connecting the PE contact with the device plug), the electrical insulation is no longer given. This also applies if the device is installed by using a metal retainer clip.

If you want to have the device electrically insulated from the power supply, you have to use a method of installation that ensures appropriate insulation.

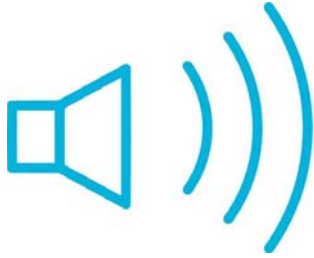
How to proceed if a PE system is used:

You must adhere to the following figure in order to ensure a correct installation of the PE system.



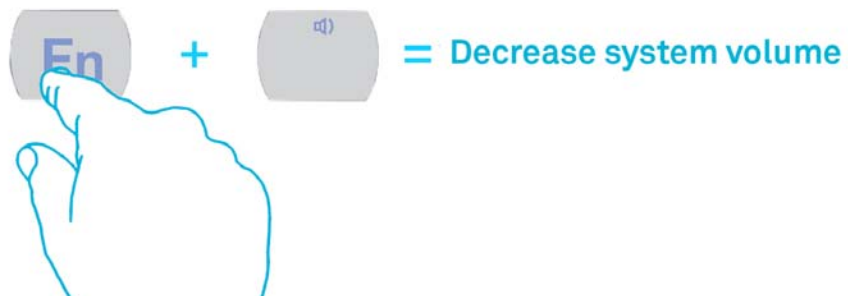
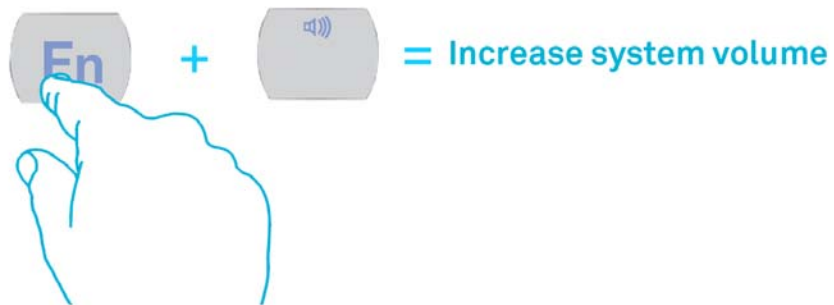
6.1 SPEAKERS

The OPC60xx is equipped with two internal speakers.



Note:

The volume can be set up by using the device front keys. When activating the described key combinations, the volume level is modified. If the **soft keyboard** is installed, the system volume is additionally displayed by a display bar.



6.2 USB CONNECTIONS

The USB interfaces are used for connecting peripherals with USB connection. These interfaces comply with the USB 2.0 standard requirements.

PIN-NUMBER	SIGNAL NAME
1	VDC
2	D -
3	D+
4	GND



Note:

The device supports a maximum of 8 external USB mass storage devices. If a USB Flash SSD is integrated, a maximum of 7 USB mass storage devices can be connected.



Note:

The USB interfaces can be individually locked by using the "Lock USB" software tool.

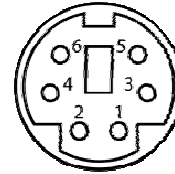
USB CONNECTION IN THE FRONT PANEL

One USB interface can be accessed from the front. The interface is located under a plastic cover underneath the display. The cover has a tab on the right-hand side, which is used for opening. The plastic cover of the USB interface must be returned in protective position after use.

6.3 PS/2 CONNECTOR

A keyboard can directly be operated by using the PS/2 socket connector.

PIN-NUMBER	SIGNAL NAME
1	Keyboard Data
2	Maus Data
3	GND
4	+5V
5	Keyboard Clock
6	Maus Clock



Note:

Since the timing of the integrated controller is specifically set up for cherry keyboards, keyboards of this manufacturer should preferably be used.

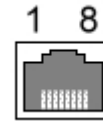
If the soft keyboard is actively displayed on the monitor, the use of the external keyboard for control purposes is limited.

The keyboard must be connected before switching the device on, because the keyboard interface is initialised in the process of booting. If the keyboard is plugged in while the device is running without having had the keyboard connected while booting, it will not be functional.

6.4 NETWORK CONNECTION (RJ45)

If the drivers required for functioning are installed on the device, the control system may be integrated in an Ethernet network supporting the 10/100/1000Mbit standard by using the Ethernet 10/100/1000BaseT network connector. Specifications of this network topology must be observed in this case. You can install the drivers required for functioning from the enclosed service CD, should they not be installed on the device.

PIN-NUMBER	SIGNAL NAME
1	TX +
2	TX -
3	RX +
4	NC
5	NC
6	RX -
7	NC
8	NC



Note:

The device has two separately integrated network controllers of the Realtek RTL 8111c Family PCIe Gigabit Ethernet type.



Note:

PXE booting is only possible by using the LAN1 port.

6.5 SERIAL COM INTERFACE (RS232)

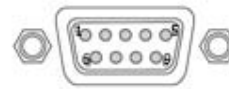
The serial interface is used for digital data transmission. The RS232 interface can be connected by using a commercially available 9-pin SUB-D cable.



Note:

Pin 9 of the serial interface connector can be used for additional switching of a 5V power supply, e.g. for operating a serial barcode scanner. The **COM +5V** switch in the service slot of the device must be put in the **ON** position in order to use this function. A subsequent restart of the computer might be required in order to properly activate this function.

PIN-NUMBER	SIGNAL NAME
1	DCD
2	RxD
3	TxD
4	DTR
5	GND
6	DSR
7	RTS
8	CTS
9	RI oder + 5V DC (max. 1 A)



Note:

This interface is not electrically isolated.

7 DRIVES

7.1 HARD DRIVE / FLASH SSD

The storage medium is selected according to the customer requirements. The following options are available for storage:

Flash SSD: A Flash SSD with a storage capacity of at least 1GB is used. Its capacity depends on the desired operating system and the additional programmes to be installed.



Note:

Recommendation for the choice of storage medium with a basic installation:

SSD Flash memory: Windows CE 6.0 / Windows XP embedded

Hard disk: Windows XP Professional

7.2 EXTERNAL DRIVES

By default, no drive for removable media (CD/floppy disk) is integrated in the device. Instead, the system provides a USB interface, to which an external drive can be connected. In this case you'd have to ensure that the used device is suitable for industrial environments.



Warning:

Connecting or disconnecting external drives during operation is not admissible, since it cannot be excluded that the drive might be in use while connecting or disconnecting it. Data loss might result in the event of non-compliance!

8 SOFTWARE & DRIVER INSTALLATION

The device will be delivered with a pre-installed Windows / Linux operating system depending on what the customer wants. The drivers required for this are already installed and the operating system will be enabled by entering the licence information. Should an initial installation be required, please follow the following steps. With a newer operating system like Windows XP, the network card and graphics card will properly be recognised during the initial installation, so that only the touch screen driver and the soft keyboard must be installed separately.



Note:

If the hard drive was formatted, the operating system can be reinstalled by using one of the existing interfaces.

An external keyboard is required for installation.

8.1 INSTALLING THE OPERATING SYSTEM

The device does not have any integrated CD drive. The installation of the operating system can therefore only be carried out by using the USB interface.

Procedure for installation:

- The boot drive in the system Bios must be switched to USB in order to boot the device from the USB interface.
- Restart the device and insert a Windows CD.
- Install Windows and set up the basic data.
- With devices including touch screens, the touch screen driver as well as the soft keyboard should be installed in order to ensure their full functionality.

With Windows CE 6.0 or Windows XP embedded, a complete image can also be installed by using a USB stick.

8.2 TOUCH SCREEN DRIVER INSTALLATION

**Note:**

When installing the driver, you'll have to take in account that the touch screen monitor is internally connected with the USB interface!

Touch screen monitor and PS2 mouse can be operated simultaneously.

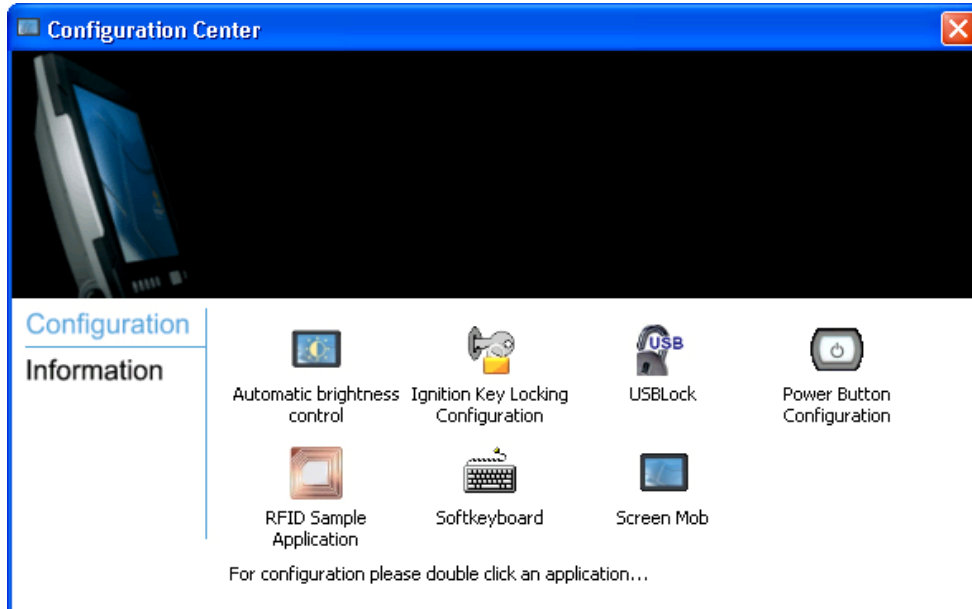
The installation has to be carried out as described below:

- Switch on PC and boot.
- Access the service CD by using the Explorer and start the Installer file in the TouchScreen folder.
- Follow the on-screen instructions and acknowledge the licence terms and conditions.
- Once the installer has completed the installation, shut down the computer and restart it subsequently.
- After restarting, the touch screen monitor has to be calibrated. If the driver does not automatically start, activate the setup menu via "**Start => Settings => Control panel => Elo Touchscreen**".
- Via the "**Calibration data**" menu, calibrating the touch screen monitor can be started, and the crosses appearing in a succession on the monitor have to be pushed for calibration. If the cursor position perfectly matches the touch point of your finger, you can exit this control menu by pushing "**OK**".

8.3 CONFIGURATION CENTER

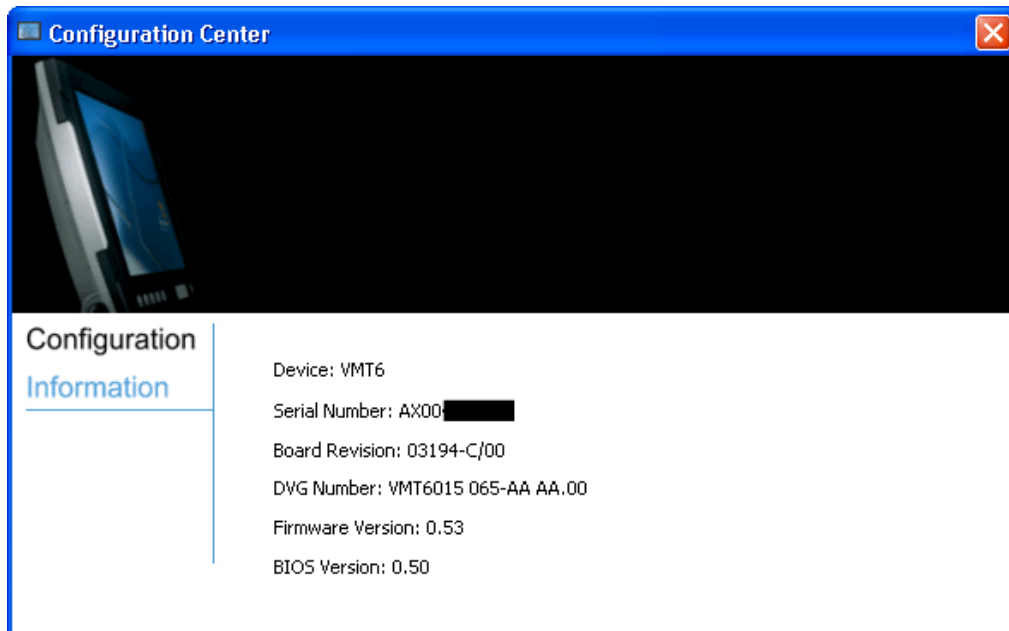
CONFIGURATION

The start page of the Configuration Center provides you with an overview of which ads-tec applications are installed on the device. Additionally, you can start any of these applications from the Configuration Center by double-clicking on it.



INFORMATION

In the Information section, device specific data like the device type, the firmware version and the serial number are listed. The information you'll find here must be indicated whenever you need to contact the support department.



8.4 AUTOMATIC BRIGHTNESS ADAPTATION

**Note:**

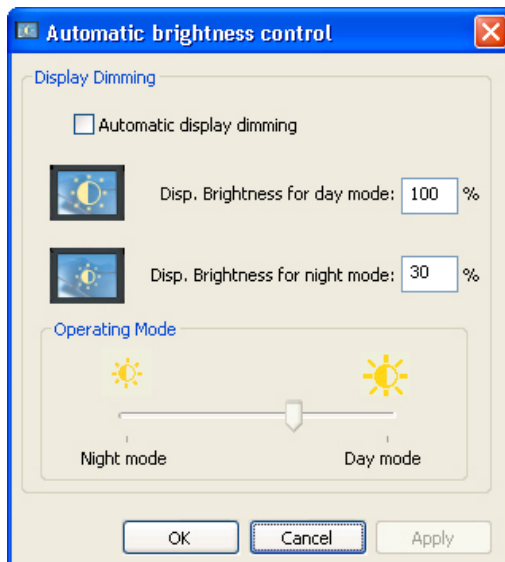
The application of **Automatic brightness adaptation** allows the user to configure the respective display brightness.

The display brightness can be changed manually, or alternatively automatically by enabling the **Automatic brightness adaptation**, which controls the brightness automatically depending on the ambient light level. Once the automatic brightness control is enabled, the brightness can no longer be modified by using the front keys.

We distinguish between two different control modes with the automatic control:

Day mode / Night mode

Separate display brightness levels can be programmed for either of both modes.

**Note:**

The threshold for Day-/Night mode has to be determined individually by the user for each device.

The day mode is enabled as soon as the ambient brightness is high enough. The display brightness should be set to a slightly higher level than at night.

The night mode is enabled if the ambient brightness level is low. The display brightness can be set to a lower level in this mode.

The operating mode of the automatic control can seamlessly be changed between day and night mode by using a slide control.

The closer the slider is to the day mode position, the darker the ambient light must be before the display brightness is changed to night mode. And vice versa: the closer the slider is put to the night mode position, the brighter the ambient light must be before the display brightness is increased to the value set up for the day mode.

In order to save the changes, you'll have to push either **Save** or **OK**.

8.5 USB LOCK FUNCTION

The USB lock function enables you to lock the USB ports, if required, and to avoid access by unauthorised people.

MESSAGING

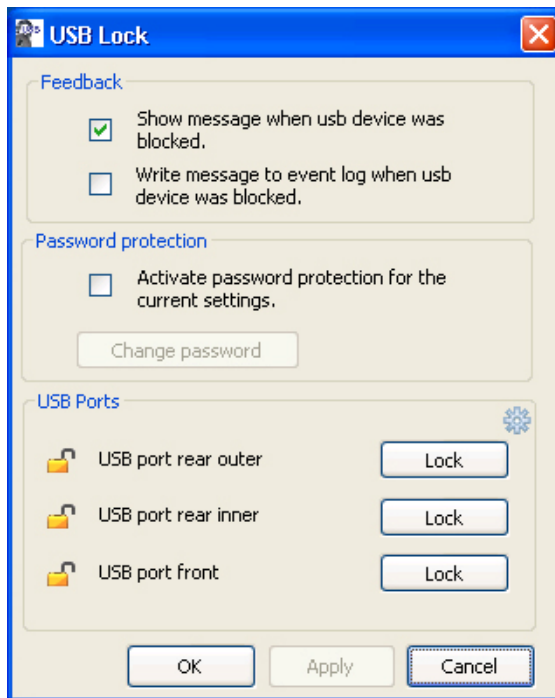
In the Messaging section, you can set up whether a message should be output in the event that a USB port is locked or not. Additionally, the locking process can be logged in the event log.

PASSWORD PROTECTION

In order to avoid any unauthorised access to the USB Lock programme, the settings made can be provided with password protection. In this case, the settings can only be modified if the password was entered correctly.

USB INTERFACES

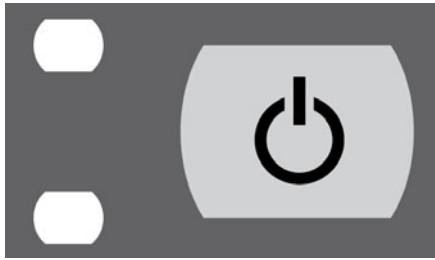
The desired USB ports can individually be locked by using the **Lock** button.



All changes must be confirmed with the **Save** button.

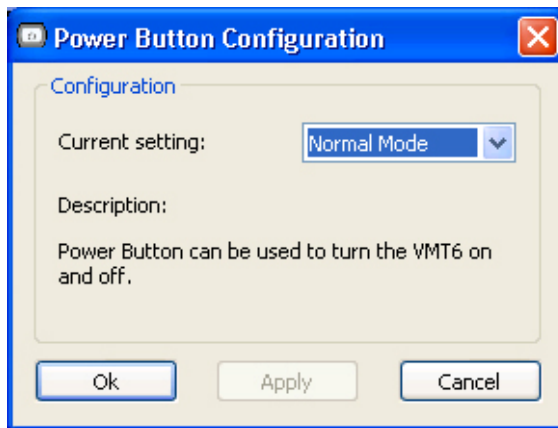
8.6 ON / OFF PUSHBUTTON CONFIGURATION

The ON / OFF pushbutton configuration allows to change the behaviour of the ON / OFF pushbutton.



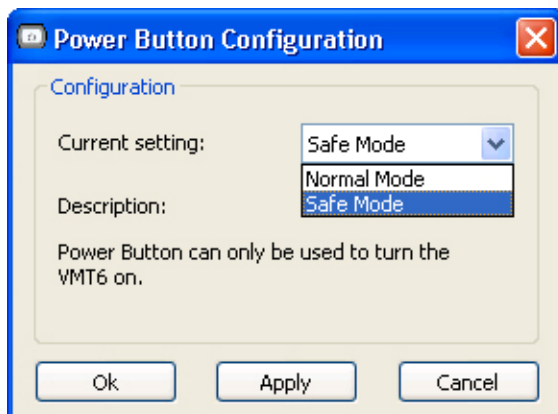
REGULAR MODE

The ON / OFF pushbutton switched the device on and off.



SECURE MODE

The ON / OFF pushbutton only switches the device on. The switch-off function is disabled.

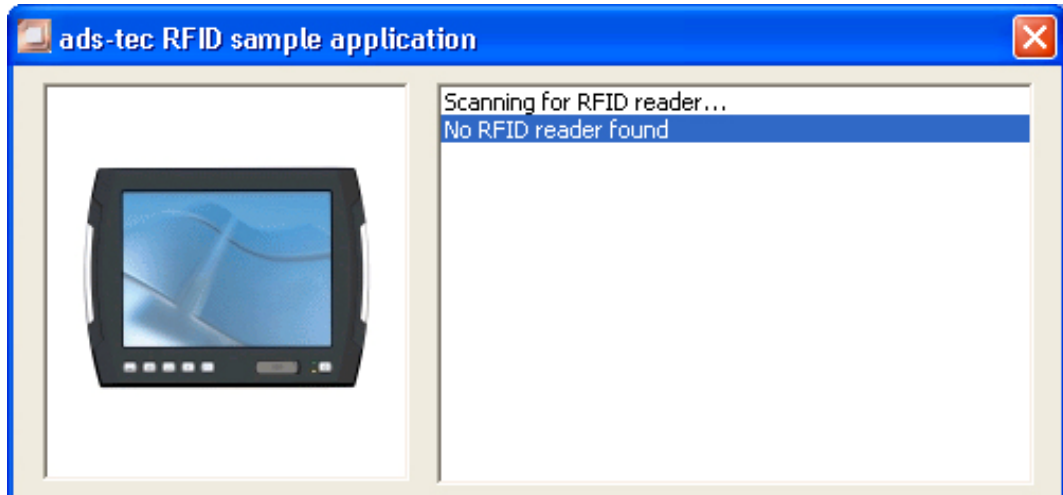


Note:

If the secure mode is used, the device can only be shut down by the software.

8.7 EXEMPLARY RFID APPLICATION

The exemplary RFID application was developed in order to test the function of the RFID reader.



Note:

Function only for devices with RFID possible.

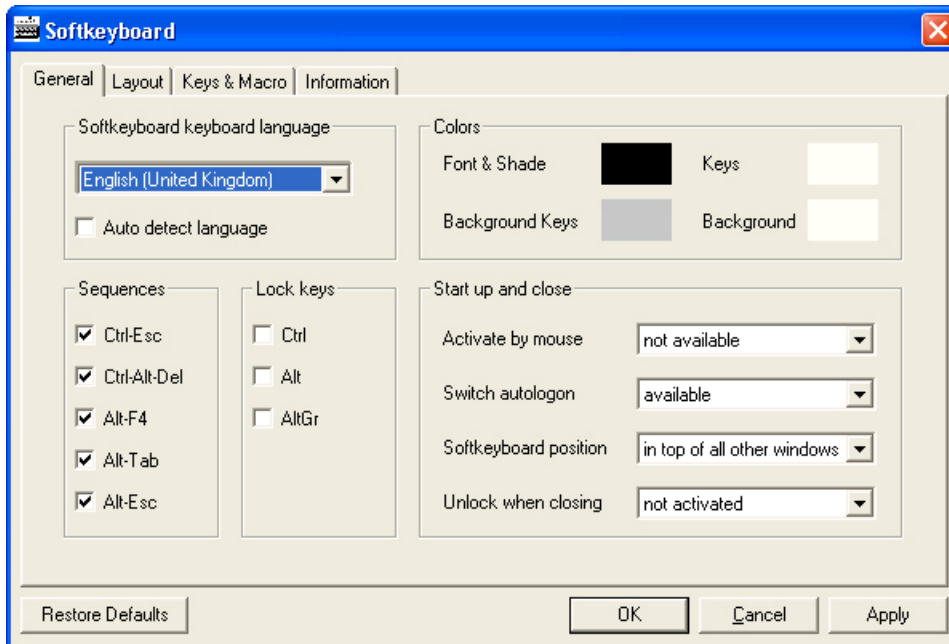


Note:

In the Interfaces section of the manual you can find more information about the topic of RFIDs.

8.8 SOFT KEYBOARD

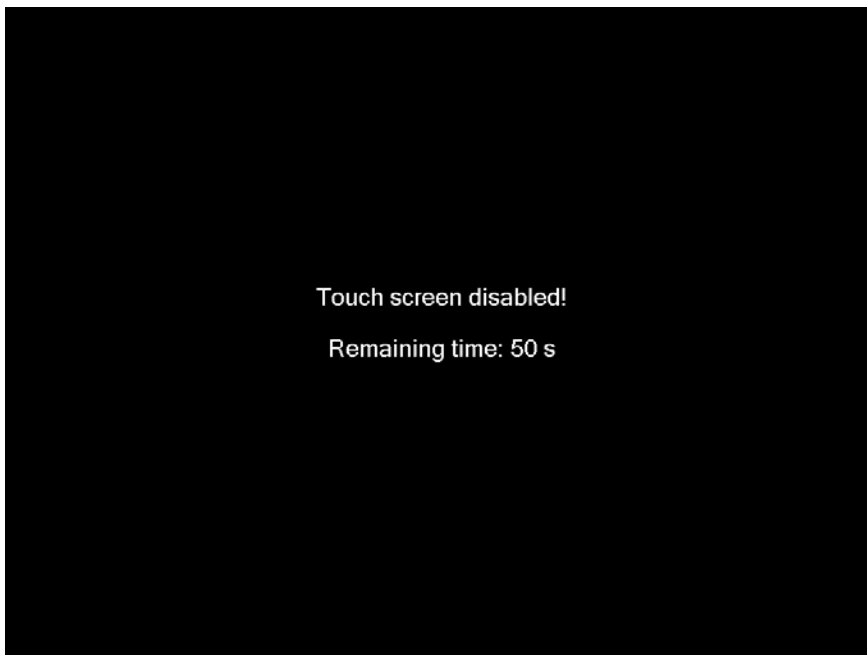
Here you can configure the soft keyboard application. A large variety of settings, like layout or commands can individually be adapted.



All changes must be confirmed by pushing the **Save** button.

8.9 SCREEN MOB

The Screen Mob application was developed in order to disable the touch screen of the device for a certain period of time. This function can be used for cleaning the touch screen.



8.10 SOFT KEYBOARD INSTALLATION

The soft keyboard must be installed from the enclosed service CD in order to ensure usability of the 5 keys (except for the VMT series, where you have 6 keys) underneath the monitor. The installation has to be carried out as described below:

- Plug in connector of external drive at the device
- Switch on PC, insert driver CD into drive after booting
- Start installer from the service CD
- Follow on-screen instructions, install the driver, select the language and confirm the restart of the computer.



Note:

*You can make further changes to the basic settings of the soft keyboard, if required.
More information about this topic you'll find in the "Readme" file in the installation folder for the soft keyboard!*

9 TECHNICAL DETAILS

OPC601x-Series	6012	6015
Display Data		
Display	12,1" TFT 800 x 600 Pixel	15,0" TFT 1024 x 768 Pixel
Represented Colours	max. 256K. colours	max. 16,1 Mio. colours
Automatic or manual display brightness adjustment		
TouchScreen	Resistive Industrial Touchscreen	
Computer Data		
Processor	Atom™ 1,6 GHz	
RAM	1 GB oder 2 GB DDR2 RAM	
Chipset	Intel® SCH US15W chipset incl. integrated graphic controller	
Graphic memory	max. 8 MB shared	
Mass storage	2 x Flash SSD (over interal USB-Connection)	1 x Flash SSD (over interal USB-Connection) 2,5" Automotive Harddisk ≥ 40 GB (UDMA) 2,5" SSD PATA ≥ 2 GB
Interfaces	COM 1 (RS232, connectable 5V power supply for scanner) 1 x PS/2 (Mouse/Keyboard) 2 x USB 2.0 1 x USB 2.0 in Front panel (disconnectable)	
Network	2 x Ethernet (10/100/1000MBit) RJ 45	
General Data		
External Dimenions	338 x 261 x 62 mm	400 x 305 x 65 mm
Weight	ca. 3,3 kg	ca. 4,3 kg
Protection Class		
Power consumption	100W	110W

10 SERVICE AND SUPPORT

ads-tec and its partner companies offer your customers a comprehensive service and support, which ensures availability of a fast and competent support with respect to all upcoming questions related to ads-tec products or assemblies.

Since the devices manufactured by ads-tec are also used by associate companies, these devices might be configured in customer specific ways. Should any questions arise with respect to these specific configurations and software installations, they can only be answered by the system manufacturer.

For devices not directly purchased from ads-tec we don't deliver any support. The support is delivered by our associate companies in these cases.

10.1 ADS-TEC SUPPORT

The ads-tec support team is available for phone calls from direct clients from Monday to Friday from 8:30 AM to 5:00 PM by using the following phone number:

Phone: +49 711 45894-500
Fax: +49 711 45894-990
Email: mailbox@ads-tec.de

10.2 COMPANY ADDRESS

ads-tec
Automation Daten- und Systemtechnik GmbH
Raiffeisenstraße 14
D-70771 Leinfelden-Echterdingen
Germany

Phone: +49 711 45894-0
Fax: +49 711 45894-990
Email: mailbox@ads-tec.de
Home page: www.ads-tec.de

1 1 CE CONFORMITY DECLARATION

OPC6012

EG-Konformitätserklärung / EC Declaration of Conformity		
Hersteller / Adresse: <i>Manufacturer / Address:</i>	ads-tec GmbH Raiffeisenstr. 14 70771 Leinfelden-Echterdingen / Germany	
Produktbeschreibung: <i>Productdescription:</i>	OPC 6012 Modell / Model: DVG-OPC6012-xxx-yy	
	xxx	Ist eine fortlaufende Nummer zwischen 001 bis 899 und definiert die System-Konfigurationen. <i>Is a continuous number between 001 to 899 and defines the System-configurations.</i>
	yy	Zwei unterschiedliche Buchstaben abhängig vom Betriebssystem <i>Two varying letters depending on the Operating System</i>
Das oben beschriebene Produkt stimmt in der von uns in Verkehr gebrachten Ausführung mit den Bestimmungen folgender Europäischer Richtlinien überein: <i>The product described above in the form as delivered is in conformity with the provisions of the following European Directives:</i>		
2004/108/EC	Richtlinie des Europäischen Parlaments und des Rates zur Angleichung der Rechtsvorschriften der Mitgliedstaaten über die elektromagnetische Verträglichkeit (Anwendung trifft nur zu bei Produkten ohne Funk-Kommunikation) <i>Directive of the European Parliament and of the Council on the approximation of the laws of the Member States relating to electromagnetic compatibility (Applies only for products without Radio-Communication)</i>	
2006/95/EC	Richtlinie des Europäischen Parlaments und des Rates zur Angleichung der Rechtsvorschriften der Mitgliedstaaten betreffend elektrische Betriebsmittel zur Verwendung innerhalb bestimmter Spannungsgrenzen (Anwendung trifft nur zu bei Produkten mit 50 – 1000V AC Eingangsspannung) <i>Directive of the European Parliament and of the Council on the approximation of the laws of Member States relating to electrical equipment designed for use within certain voltage limits (Applies only for products with 50 – 1000V AC input voltage)</i>	
CE-Kennzeichnung / CE marking : 11		
Das oben beschriebene Produkt ist konform mit den Anforderungen der folgenden Dokumente: <i>The product of the declaration described above is in conformity with the requirements of the following documents:</i>		
EU harmonisierte Normen <i>EU harmonized Standards</i>	EMV/EMC: EN 55022:2006+A1:2007 EN 55024:1998+A1:2001+A2:2003 EN 61000-3-2:2006+A1:2009+A2:2009 EN 61000-3-3:2008 Sicherheit/Safety: EN 60950-1:2006 +A1:2009	
Ort, Datum <i>Place and date of issue</i>	Leinfelden-Echterdingen, 24/05/2011	
Name und Unterschrift <i>Name and signature</i>	 Elmar Bossler - Quality Manager -	 Thomas Mögerle - Manager Business Unit Data Systems -
<small>Diese Erklärung bescheinigt die Übereinstimmung mit den genannten Richtlinien, ist jedoch keine Beschaffenheits- oder Haltbarkeitsgarantie nach §443 BGB. Die Sicherheits- und Einbauhinweise der mitgelieferten Produktdokumentation sind zu beachten. <i>This declaration certifies the conformity to the specified directives but does not imply any warranty for properties. The safety and installation documentation accompanying the product shall be considered in detail.</i></small>		

OPC6015

EG-Konformitätserklärung / EC Declaration of Conformity 

Hersteller / Adresse: **ads-tec GmbH Raiffeisenstr. 14**
 Manufacturer / Address: **70771 Leinfelden-Echterdingen / Germany**

Produktbeschreibung: **OPC 6015 Modell / Model: DVG-OPC6015-xxx-yy**
 Product description:

xxx Ist eine fortlaufende Nummer zwischen 001 bis 899 und definiert die System-Konfigurationen.
 Is a continuous number between 001 to 899 and defines the System-configurations.

yy Zwei unterschiedliche Buchstaben abhängig vom Betriebssystem
 Two varying letters depending on the Operating System

Das oben beschriebene Produkt stimmt in der von uns in Verkehr gebrachten Ausführung mit den Bestimmungen folgender Europäischer Richtlinien überein:
 The product described above in the form as delivered is in conformity with the provisions of the following European Directives:

2004/108/EC Richtlinie des Europäischen Parlaments und des Rates zur Angleichung der Rechtsvorschriften der Mitgliedstaaten über die elektromagnetische Verträglichkeit (Anwendung trifft nur zu bei Produkten ohne Funk-Kommunikation)
 Directive of the European Parliament and of the Council on the approximation of the laws of the Member States relating to electromagnetic compatibility (Applies only for products without Radio-Communication)

2006/95/EC Richtlinie des Europäischen Parlaments und des Rates zur Angleichung der Rechtsvorschriften der Mitgliedstaaten betreffend elektrische Betriebsmittel zur Verwendung innerhalb bestimmter Spannungsgrenzen (Anwendung trifft nur zu bei Produkten mit 50 – 1000V AC Eingangsspannung)
 Directive of the European Parliament and of the Council on the approximation of the laws of Member States relating to electrical equipment designed for use within certain voltage limits (Applies only for products with 50 – 1000V AC input voltage)

CE-Kennzeichnung / CE marking : 11

Das oben beschriebene Produkt ist konform mit den Anforderungen der folgenden Dokumente:
 The product of the declaration described above is in conformity with the requirements of the following documents:

EU harmonisierte Normen **EMV/EMC: EN 55022:2006+A1:2007 EN 55024:1998+A1:2001+A2:2003**
 EU harmonized Standards **EN 61000-3-2:2006+A1:2009+A2:2009 EN 61000-3-3:2008**
Sicherheit/Safety: EN 60950-1:2006 +A11:2009

Ort, Datum **Leinfelden-Echterdingen, 18/04/2011**
 Place and date of issue

Name und Unterschrift  
 Name and signature **Elmar Bossler** **Thomas Mögerle**
 - Quality Manager - **- Manager Business Unit Data Systems -**

Diese Erklärung bescheinigt die Übereinstimmung mit den genannten Richtlinien, ist jedoch keine Beschaffenheits- oder Haltbarkeitsgarantie nach §443 BGB. Die Sicherheits- und Einbauhinweise der mitgelieferten Produktdokumentation sind zu beachten.
 This declaration certifies the conformity to the specified directives but does not imply any warranty for properties. The safety and installation documentation accompanying the product shall be considered in detail.